

Altadena Coalition of Neighborhood Associations (ACONA)

Let's keep Altadena
*"The best neighborhood in LA
County"!*

January 23, 2018



Agenda for Tonight's Meeting

7:00 PM – 8:30 PM

- **7:00 PM – 7:05 PM Quick introductions and welcome**
- **7:05 PM – 7:30 PM L A County Department of Public Works - Who to Call?**
 - James Yang P.E., Department of Public Works, County of Los Angeles
- **7:30 PM – 7:50 PM Complete Streets + Altadena**
 - Elaine Kunitake, P.E. ,Department of Public Works L A County
- **7:50 PM – 7:55 PM Map Your Neighborhood - Classes 2018**
 - Holly Rundberg, ACONA Co-Founder
- **8:00PM – 8:30 PM Open discussion Q&A**
- **8:30 PM Meeting end**



Your ACONA Team

- Elliot Gold
- Nina Ehlig
- Melody Comfort
- Sussy Nemer
- Captain Vicki Stuckey
- Sgt. Harvey “Sandy” Crosthwaite
- Holly Rundberg
- Carlotta Martin
- Dale Comfort
- Ellen Walton



**7:05 PM – 7:30 PM L A County
Department of Public Works -
Who to Call?**

**– James Yang P.E., Department of Public
Works, County of Los Angeles**



Los Angeles County Department of Public Works

James Yang P.E.
Department of Public Works
County of Los Angeles





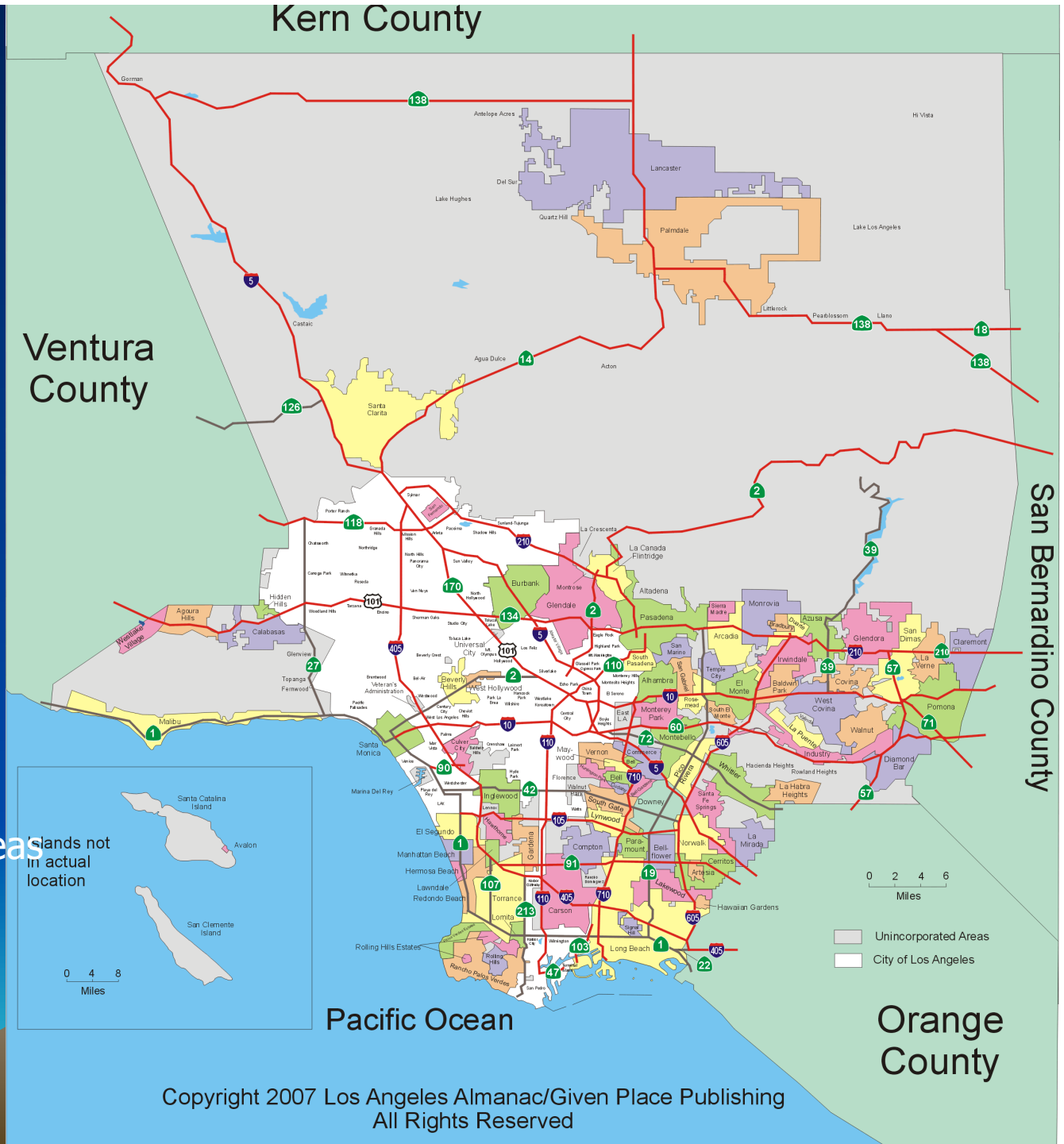
Los Angeles County Department of Public Works



- Headquartered in Alhambra, CA
- 77 Field Offices
- \$2 Billion annual budget
- 4,000 employees



- 4,000 Sq. miles
- 10 Million population
- 88 cities
- 140 unincorporated areas
- 75 miles of beaches
- 2 islands





Public Works Service Areas

**Public
Buildings**

**Water
Resources**

**Waste
Management**

Transportation

**Development
Services**

**Emergency
Management**

Capital Project Management

Fire Stations

Sheriff Stations

Hospitals

Health facilities

Probation

Music & Performing Arts

Public Libraries

Beaches & Harbors

Mental Health

Parks & Recreation

Animal Care & Control

Other County facilities





Public Works Service Areas

Public
Buildings

Water
Resources

Waste
Management

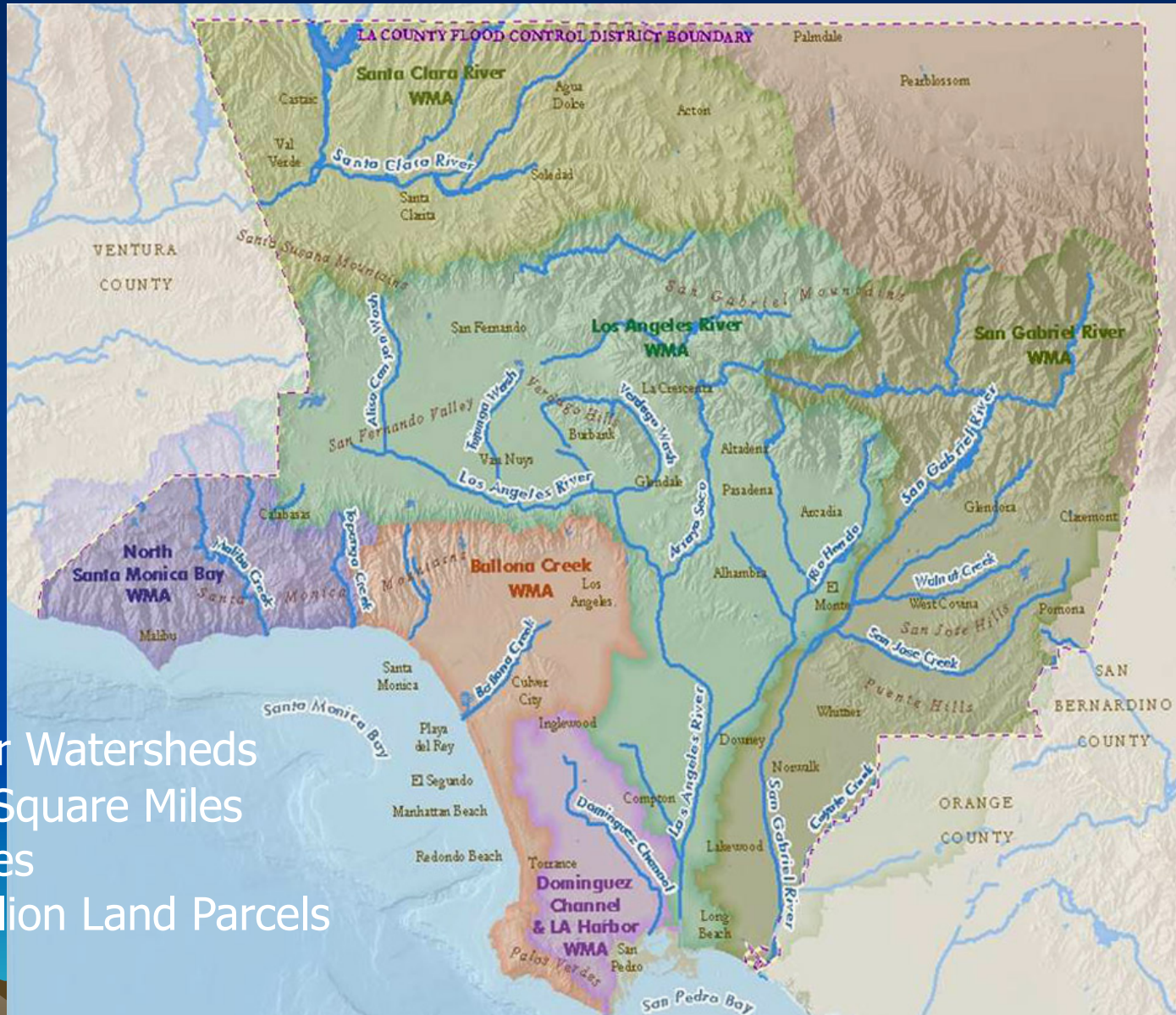
Transportation

Development
Services

Emergency
Management

Water Resource Management

- 7 Major Watersheds
- 3,000 Square Miles
- 85 Cities
- 2.1 Million Land Parcels



Water Resources Management

Our mission is to provide sustainable water supplies and healthy watersheds while reducing flood risk for our communities

- Operate and Maintain 14 major dams
- 27 ground water recharge facilities
- 500 miles of open channel
- 2200 miles of underground storm drain
- 80,000 catch basins
- 22 miles Seawater Barrier Facilities



- 5,250 Miles of Sewers & 155 Pump Stations





Public Works Service Areas

Public
Buildings

Water
Resources

Waste
Management

Transportation

Development
Services

Emergency
Management

Waste Management



Waste Reduction and Recycling Programs



Public Works Service Areas

Public
Buildings

Water
Resources

Waste
Management

Transportation

Development
Services

Emergency
Management

Transportation

Public Works oversees the design, construction & maintenance of the County's road and transportation system, including:

- Over 5,000 miles of roads
- Bicycle Trails
- Maintain over 507 bridges

Our Street Maintenance crew is also in charge of:

- Tree trimming, removal and planting
- Street Sweeping
- Sidewalk repair
- No parking street sweeping signs
- Illegal dumping in street



Transportation

Traffic control and/or traffic calming measures

- Stop Signs
- Traffic Signals
- Speed Limit Signs
- Parking Restrictions





Public Works Service Areas

Public
Buildings

Water
Resources

Waste
Management

Transportation

Development
Services

Emergency
Management

Development Services



Building Inspection

Development Services



Code Enforcement



Public Works Service Areas

Public
Buildings

Water
Resources

Waste
Management

Transportation

Development
Services

Emergency
Management

Emergency Response



Building Permits and Code Enforcement

Building Plan Checking/Permits
San Gabriel Valley Office 626-574-0941

Building Rehabilitation and Code Enforcement
626-574-0941

- Overgrown vegetation
- Abandoned vehicles on private property
- Converted garages
- Illegal additions and construction

Road Use or Los Angeles County Flood Control District (FCD) Permits

Hollydale Permit Office 562-869-0218
Alhambra Permit Office 626-458-3129

- Encroachment Unit (*Alhambra Permit Office*)
 - Road closure, banner and pennant and house numbering on curbs
- Flood Unit, FCD (*Alhambra Permit Office*)
 - Access to Flood Control District (FCD) right of way
 - Encroachment or landscaping within FCD right of way
 - Encroachment or landscaping within FCD right of way
 - Utility crossing or excavation within FCD right of way
 - Connection to, bridge over or overbuilding a FCD facility
 - Catch basin construction or relocation
 - Any modification to an existing FCD facility
 - Construction of new private drain or miscellaneous transfer drain
- Road Unit
 - Construction, encroachment and excavation within the road right of way
- Transportation Permits (*Alhambra Permit Office*)
 - For moving of oversized or overweight loads

Environmental Programs

Trash collection

- Athens Services 888-336-6100

Environmental Information:

CleanLA.com, (888) Clean LA, or 888-253-2652

- Backyard Composting
- Business Recycling
- Construction and Demolition Debris Recycling
- Curbside Recycling
- Electronic Waste
- Home-Generated Sharps Waste
- Household Battery Collection
- Household Hazardous Waste
- Illegal Dumping reporting
- Recycling and Market Development Zone
- Residential Recycling
- Used Oil Centers
- Waste Tire Recycling

We Want Your Feedback

To report problems, request information, or provide feedback on all County Public Works Services, call 800-966-4379

Countywide Hotline -- 211
for all County Services



County of Los Angeles Department of Public Works

900 SOUTH FREMONT AVENUE
ALHAMBRA, CALIFORNIA 91803-1331

Telephone: (626) 458-5100

<http://dpw.lacounty.gov>



ESSENTIAL SERVICES ALTADENA



Enriching Lives Through Effective and Caring Service



The Works

A one-stop solution for County residents to report and track services

- REPORT – create a new issue
- LOCATE – find services in your area
- EVENTS – see community events
- STATUS – check on an existing issue
-

Are you tired of seeing vehicles illegally parked on front lawns in your neighborhood? Frustrated by graffiti on public buildings, in local parks and at other landmarks? Don't know which government agency to contact for services, then you need The Works. The Works offers a one-stop solution for County residents to report and track services. If the service is not handled by Los Angeles County, The Works will provide you with the appropriate contact information.

Available for iOS and Android

<http://dpw.lacounty.gov/theworks>



7:30 PM –7:50 PM Complete Streets + Altadena

**– Elaine Kunitake, P.E. ,Department of Public
Works L A County**



Complete Streets + Altadena

Elaine Kunitake, P.E.
Department of Public Works
County of Los Angeles



What is a “Complete Street”?

**Streets planned and designed
for ALL users**



Roadway Users



Motorists (people in vehicles)



Bicyclists (people on bikes)



Pedestrians (people on foot or in a wheelchair)



Transit Riders (people on a bus)

STREETS MOSTLY USED BY CARS



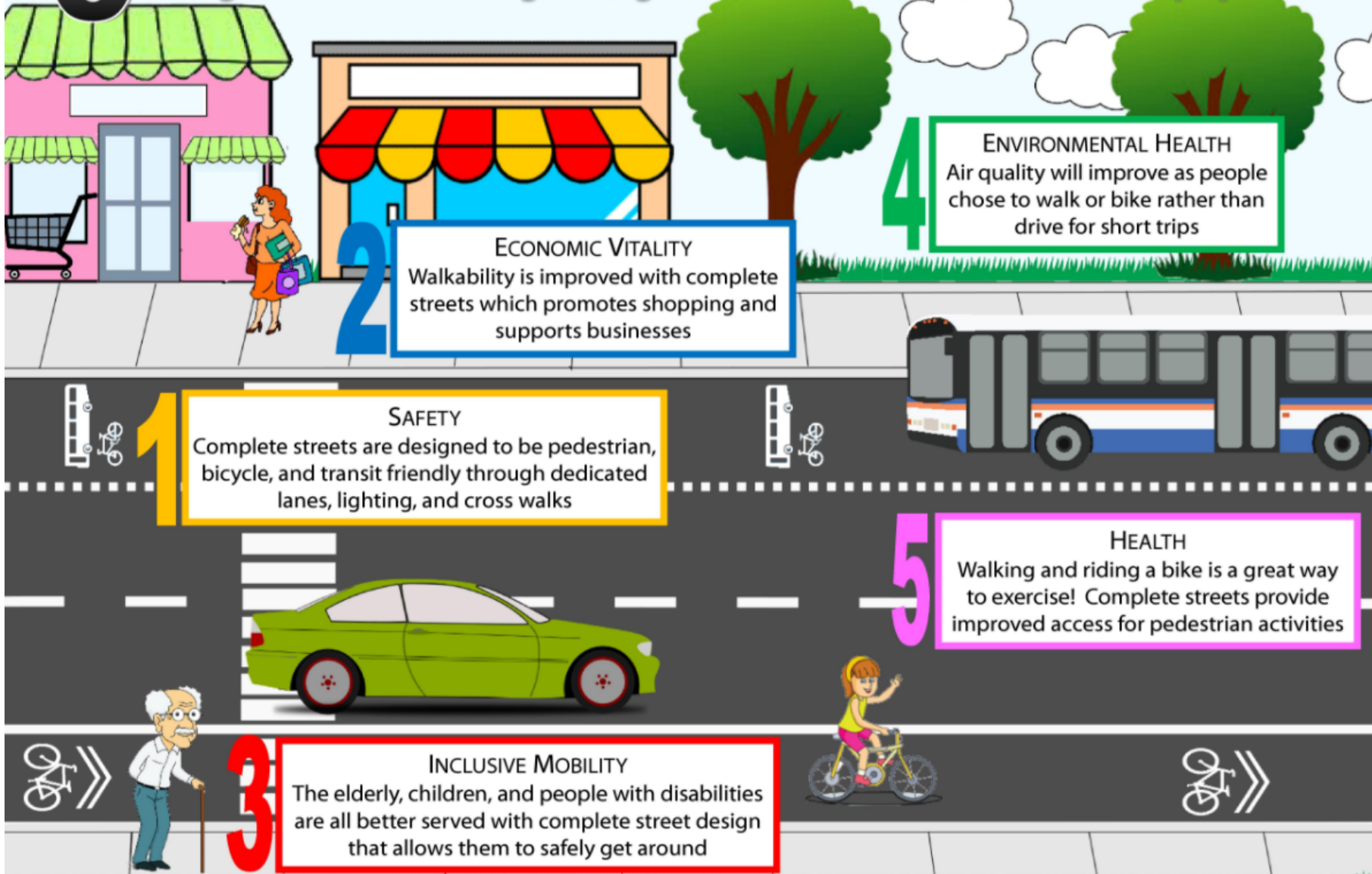
COMPLETE STREETS ARE STREETS FOR **EVERYONE**





5 BENEFITS OF COMPLETE STREETS

Shifting from auto-centered design to design that is safe and accessible to all modes and people



Learn more and find out how you can join the complete streets movement at smartgrowthamerica.org

Sources: Information—"What are the Benefits of Complete Streets", Complete Streets in Delaware: A Guide for Local Governments. December 2011.

Images—<http://images.clipartpanda.com/grass-outline-border-3500154.jpg>, <http://srcity.org/SiteCollectionImages/SharrowSymbol.jpg>, <http://www.pageresource.com/clipart/clipart/traffic/busses/bus-lane.png>, <http://cleanclipart.com/tree-clip-art/>, http://sweetclipart.com/multisite/sweetclipart/files/bus_public_transit.png, <http://www.clipartlord.com/wp-content/uploads/2013/03/car7.png>, http://classroomclipart.com/images/gallery/Clipart/Sports/Bicycle_Clipart/TN_girl_on_bicycle.jpg, <http://images.clipartpanda.com/shopper-clipart-clip-art-shopping-777654.jpg>, <https://encrypted-tbn0.gstatic.com/images?q=tbn:ANd9GcRu799GZtq5PCU-qvEDPwx2ujHacGw977bUH8RPqqMa0JQyOAx7>, http://apesmart.com/images/APESMART_CLIPART/CLIPART/buildings/bld_clip_g/STORE1.GIF, https://encrypted-tbn1.gstatic.com/images?q=tbn:ANd9GcSSOLSzEyABJkRQ5ymi5kleJxjQzm7_ibzmH0YQocvVx7lhJXv

Complete Streets Resources

- Smart Growth America
- National Association of City Transportation Officials (NACTO)
- Caltrans Complete Streets Program
- Metro Complete Streets Policy



Implementing “Complete Streets” in Altadena



County Guidelines

- General Plan – Mobility Element
 - Bicycle Master Plan
 - Community Pedestrian Plans
- Model Design Manual for Living Streets



VISION
ZERO
LA COUNTY

Safety
Mobility
Quality of life



What is Vision Zero?

Vision Zero sees traffic deaths and severe injuries as predictable and preventable, and creates goals, measurable objectives, and timelines for eliminating them.



Engineering



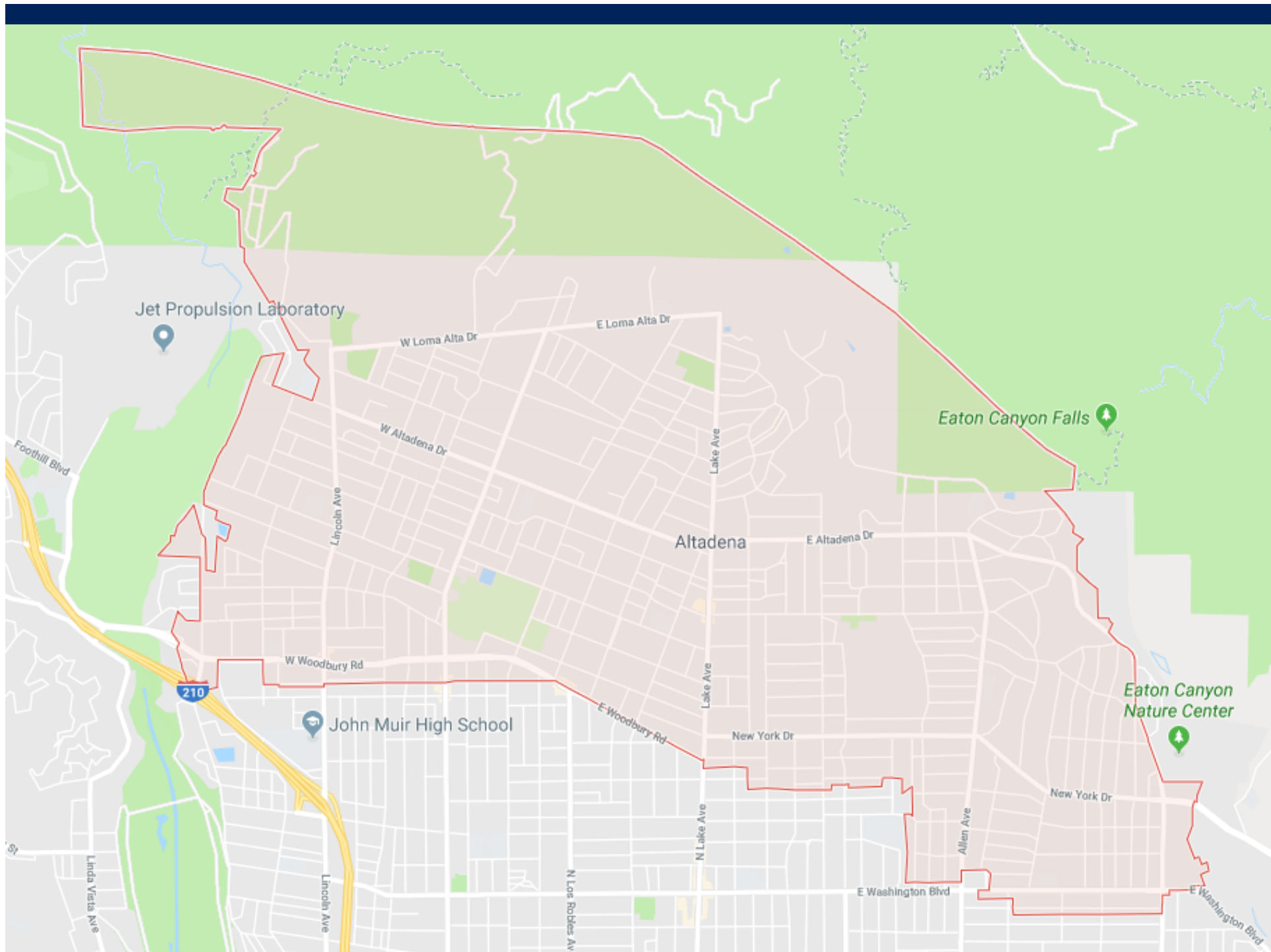
Evaluation



Enforcement



Education



Jet Propulsion Laboratory

W Loma Alta Dr

E Loma Alta Dr

Eaton Canyon Falls

Altadena

Eaton Canyon Nature Center

John Muir High School

Contact Info

Elaine Kunitake, P.E.
Department of Public Works
County of Los Angeles
ekunitake@dpw.lacounty.gov
626-458-3922



7:50 PM – 7:55 PM Map Your Neighborhood - Classes 2018

– Holly Rundberg, ACONA Co-Founder





ALTADENA

MYN – MAP YOUR NEIGHBORHOOD **DISASTER PREPAREDNESS**

A DISASTER (opposed to an emergency) is a situation in which 911 is overwhelmed and unable to answer or respond to calls for help. In such a situation, individuals and neighborhoods need to be prepared and able to help themselves and each other medically and mentally for a length of time – possibly two weeks or longer. Do you have enough water, food and medical supplies for your family and pets? Do you know the resources, skills and equipment inventory in your neighborhood?

MYN'S PURPOSE is to educate and empower small groups of neighbors, and prepare them to be self-sufficient. Emergency personnel nationwide are encouraging participation from those who may be willing to host a training in their home or organize hosted group trainings for their immediate neighbors -- 15-30 households -- determined by the reasonable group who can be accessed and attended to within the first crucial hour after a disaster. Learn how to get yourself and your family prepared, and organize a **DISASTER PLAN** for your neighborhood. We – your volunteer Altadena MYN Team -- will provide meeting materials and staff support!

FREE

ALTADENA
COMMUNITY
PREPAREDNESS
Overview & Training

CHOOSE A SUNDAY
TO GET PREPARED

JANUARY 21
MARCH 18
MAY 20
JULY 15
SEPTEMBER 16
NOVEMBER 4

4:00 p.m. – 6:30 p.m.

Altadena Town & Country Club
2290 Country Club Drive
Altadena, CA 91001

RSVP TO
626.798.9919

mynrsvp@gmail.com

Indicate which session you plan
to attend - seating is limited!
Reservations are a **MUST!**

• QUESTIONS?



**Please be sure you
signed in**

(if we already have your email
address, we just need your name)



Schedule for remaining ACONA Meetings 2018

- March 27th
- May 22nd
- Sept 25th
- Nov 27th



Thank you!
Questions?