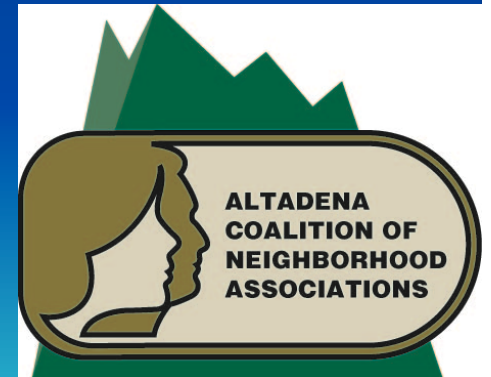


Altadena Coalition of Neighborhood Associations (ACONA)


Let's keep Altadena
*"The best neighborhood in LA
County"!*

March 23 2021



Agenda for Tonight's Meeting

7:00 PM – 8:30 PM

- **7:00 PM – 7:02 PM Quick introductions and welcome**
 - **7:02 PM – 7:22 PM Group Homes in Altadena**
 - Elizabeth Gonzalez, LMFT
Chief Program Officer, CCR Five Acres
 - Gina Peck-Sobolewski, Vice President Residential Services
 - Hathaway-Sycamores Child and Family Services
 - **7:22 PM – 7:42 PM Trail Access and crowding during Covid**
 - Zachary Likins, LA County Trails Planning
 - Jonathan Gonzalez, Senior Civil Engineering Assistant
 - Los Angeles County Public Works
 - **7:42PM – 8:02 PM Wildlife Bears in Altadena (Wildlife Watch, Keep Them Wild!)**
 - Rebecca Barboza -Wildlife Biologist
California Department of Fish and Wildlife
South Coast Region
 - **8:00 PM – 8:30 PM Q&A**
 - **8:30 PM Meeting end**
- 

Your ACONA Team

- Elliot Gold
- Nina Ehlig
- Melody Comfort
- Diane Marcussen
- Captain Marjory Jacobs
- Holly Rundberg
- Carlotta Martin
- Ellen Walton
- Savannah Moore



7:02 PM – 7:22 PM

Group Homes in Altadena

Elizabeth Gonzalez, LMFT
Chief Program Officer, CCR Five
Acres

Gina Peck-Sobolewski, Vice
President Residential Services
Hathaway-Sycamores Child and
Family Services



Hathaway-Sycamores Child and Family Services

Gina Peck-Sobolewski, LMFT

Vice President of Residential Services



Who are we?



OUR MISSION

Cultivating hope and resilience to enrich the well-being of children, adults, families and communities



OUR VISION

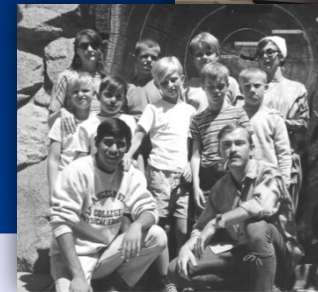
Stronger families, stronger communities

Our History



1902
Fannie Rowland opens Pasadena's first orphanage— The Pasadena Children's Training Society

1967
The Sycamores opens residential campus in Altadena ("El Nido")



Hathaway
Children &
Family Services

1919
Kiddie Koop Orphanage opens in LA metro area



Two separate organizations, one similar mission



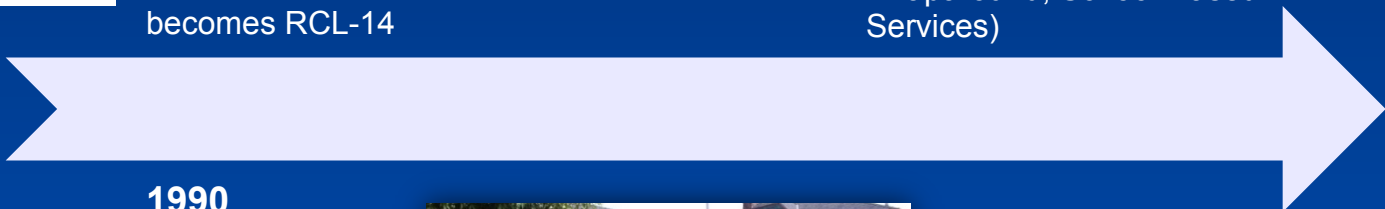
Our History



1990
Residential Services
becomes RCL-14



2000
Expansion of services into
community (e.g., Transitional
Independent Living Program,
Wraparound, School-Based
Services)



2005
Hathaway-Sycamores
merger



Hathaway
Children & Family
Services

1990
Family Resource
Center opens in
Highland Park



Two separate organizations, one similar mission



Our History



2006
Agency opens up offices throughout Los Angeles County (e.g., Lancaster, Commerce)



2011
Glendale Opportunities Classroom starts at Glendale High School

2016

- Assisted Outpatient Treatment (AOT) offered for TAY population
- Training & Research Institute piloted/proposed to Board
- Started Transitional Shelter Care program (TSC)

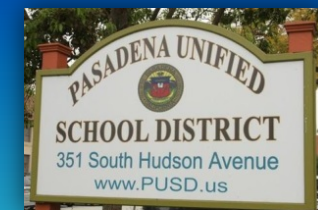
2017
Became an STRTP provider

2010
Residential Based Service (RBS) Pilot begins



2014 - 2015

- Expansion of ERMHS program to offer Educational Support Services to schools in the community
- Supportive Housing Program expands to additional SPAs



Meeting unmet community needs through program expansion

Affiliations

Licensed by CDSS

Certified by Los Angeles DMH

Accredited through The Joint Commission, since 1991

All Children All Families, since 2019

We are a non-profit behavioral health organization:

- Impacting over **16,500** children, youth, families and adults
- Employing **826** staff across **10** locations

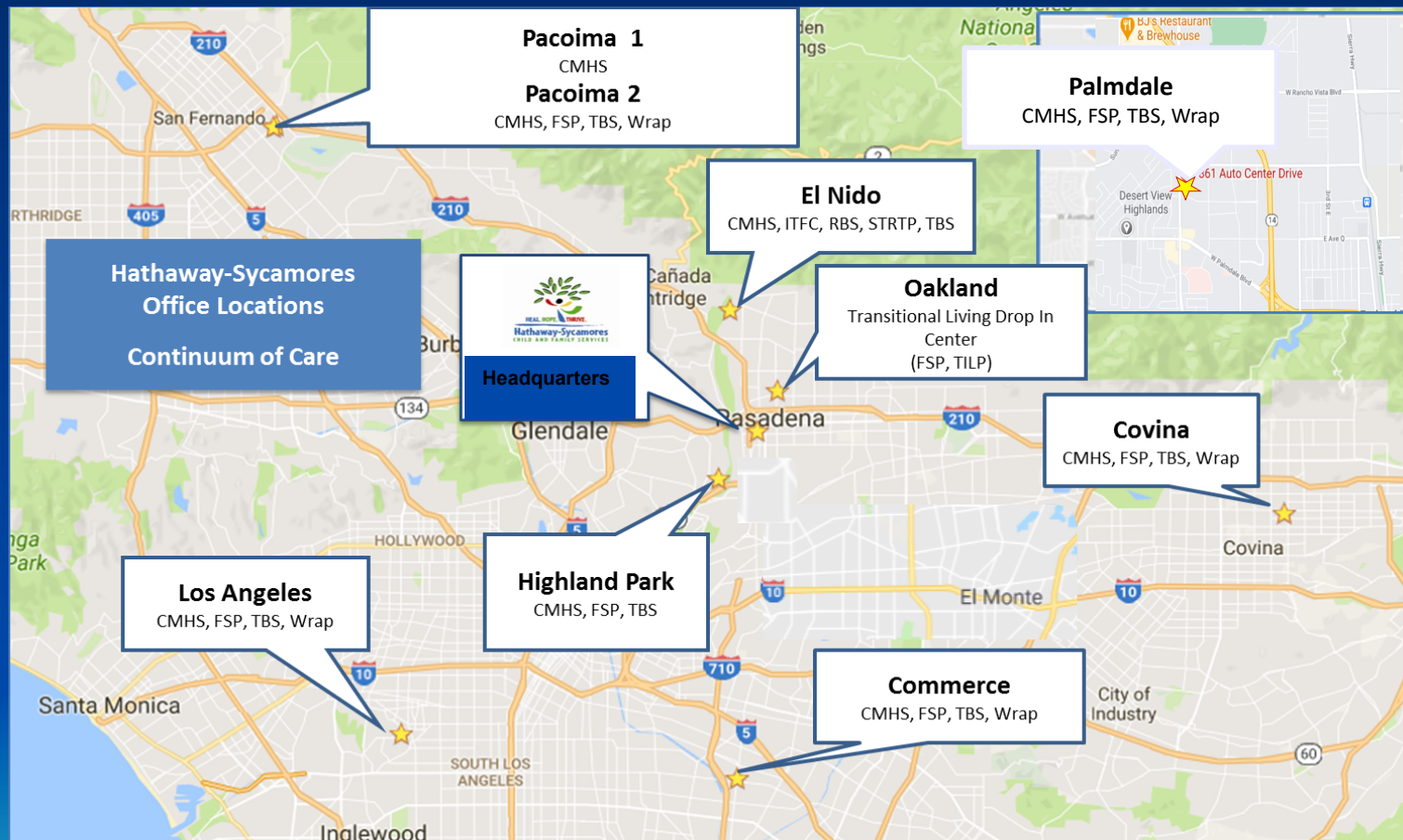


Whole-Person Continuum of Care Services



- Case Management
- Outpatient (schools and communities)
- Full-Service Partnership
- Wraparound Services
- Family Resource Center

Who do we serve?



Support Services



Co-Occurring

Medication Support

Interpretation & Translation
Services

Community Partner Satisfaction

94% of our partners are pleased with staff professionalism

92% are satisfied working with our staff

91% are likely to refer Hathaway-Sycamores again

SOURCE: 2018 Community Partner Satisfaction Survey Results



El Nido Campus

- **43 bed Short Term Residential Therapeutic Program (STRTP)** for male youth ages 11-17 and Non-Minor Dependents (NMD's)
 - Child welfare/probation/post adopt
 - Mental health treatment for victims of neglect, abuse and abandonment
 - Vocational services
 - Permanency services to include family finding outreach
 - Average length of stay is approx. 5-6 months
 - Youth attend school in the community (mostly PUSD)
 - 24-7 Crisis Support Services
- **16 bed Transitional Shelter Care (TSC) program** for male youth, ages 6-18
- **Community based services**
- **Foster Family Agency (FFA)**



Contact Information

Gina Peck-Sobolewski, Vice President of Residential Programs

gpeck@hscfs.org

FOLLOW US!



FOLLOW US! [HTTP://WWW.PINTEREST.COM/HATHSYC](http://www.pinterest.com/hathsync)

FOLLOW US!



Five Acres

Elizabeth Gonzalez, LMFT
Chief Program Officer

[see separate slide deck]



- **7:22 PM – 7:42 PM Trail Access and crowding during Covid**

– Zachary Likins

– Jonathan Gonzalez, Senior Civil Engineering Assistant Los Angeles County Public Works





Trail Access & Crowding During COVID-19

LOS ANGELES COUNTY | DEPARTMENT OF PARKS AND RECREATION | MARCH 23, 2021





Zachary Likins

Park Planner, AICP

Los Angeles County

Department of Parks and Recreation

zlikins@parks.lacounty.gov

**Why has trail use increased
so dramatically?**



Trails are getting popular

- Pre-pandemic rise in trail use
- Nationwide phenomenon
- Influence of stay-at-home orders
- Safe, free, and available exercise
- Impact to the environment
- Social impacts



What's going on at Eaton Canyon?



Eaton Canyon Overview

- Popular hiking trail through park often used to access waterfall destination and Henninger Flats within Forest boundary
- Primary access off of Altadena Drive with alternate access points via New York, Midwick, & Pinecrest

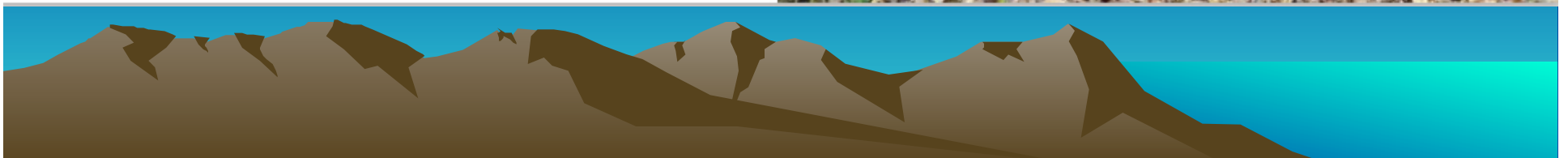
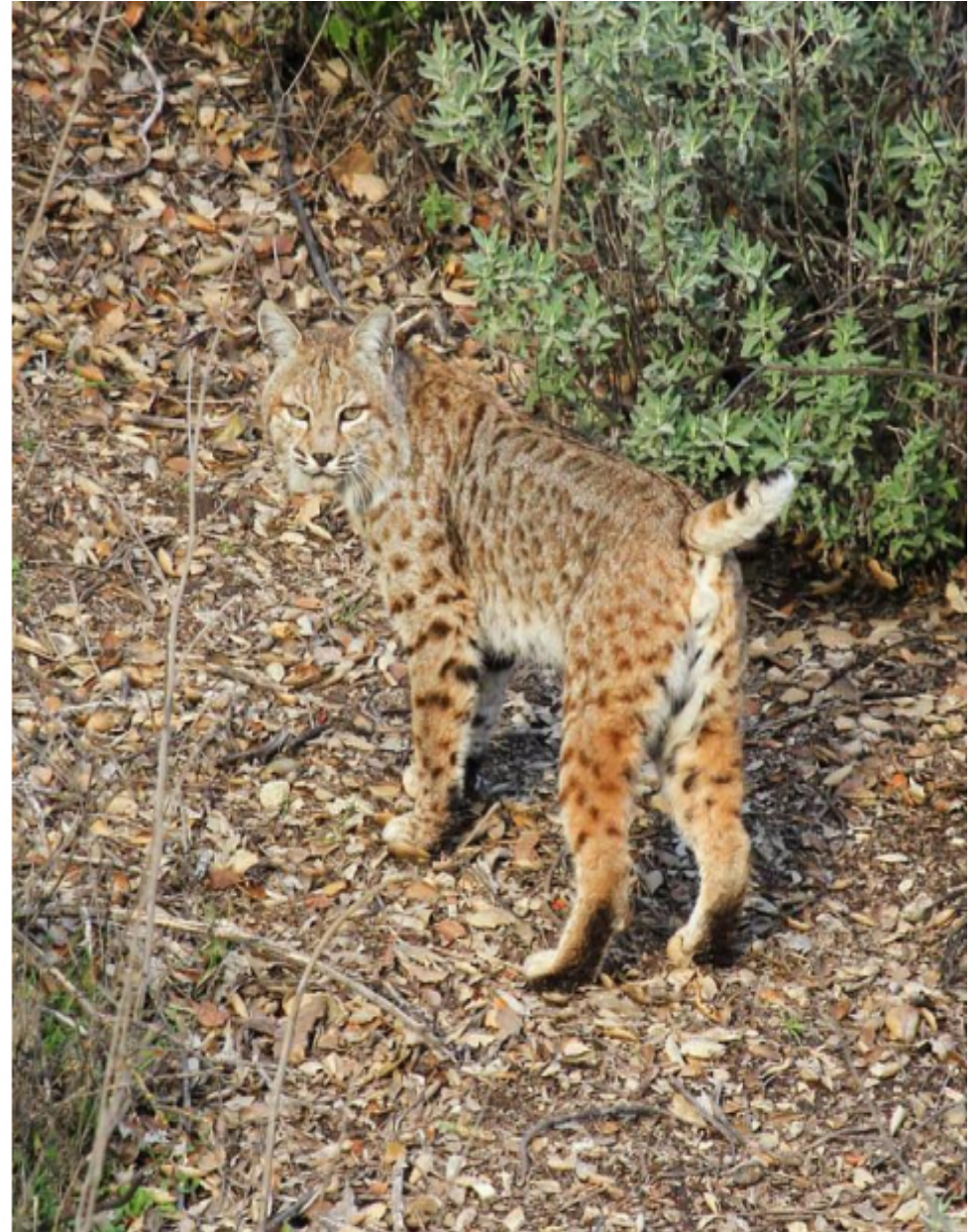
Please be advised that no changes are proposed to the current reservation system or site access at this time.



Natural Area Management Principles

Eaton Canyon is operated as a natural area and wildlife sanctuary with a dual mission:

- 1) Protect and maintain the quality of the natural resources to provide healthy wildlife habitats
- 2) Provide nature-oriented passive recreation and educational experiences that allow for personal connections with nature



Unprecedented High-Use

Need to improve our ability to manage access to Eaton Canyon in a manner that addresses resident, community and natural resource needs.



Need for Habitat Protection & Improved User Experience

Managed access to the natural area could alleviate a number of issues:

- Streambed degradation
- Loss of wildlife habitat
- Increased trash and graffiti
- Crowding on the trails



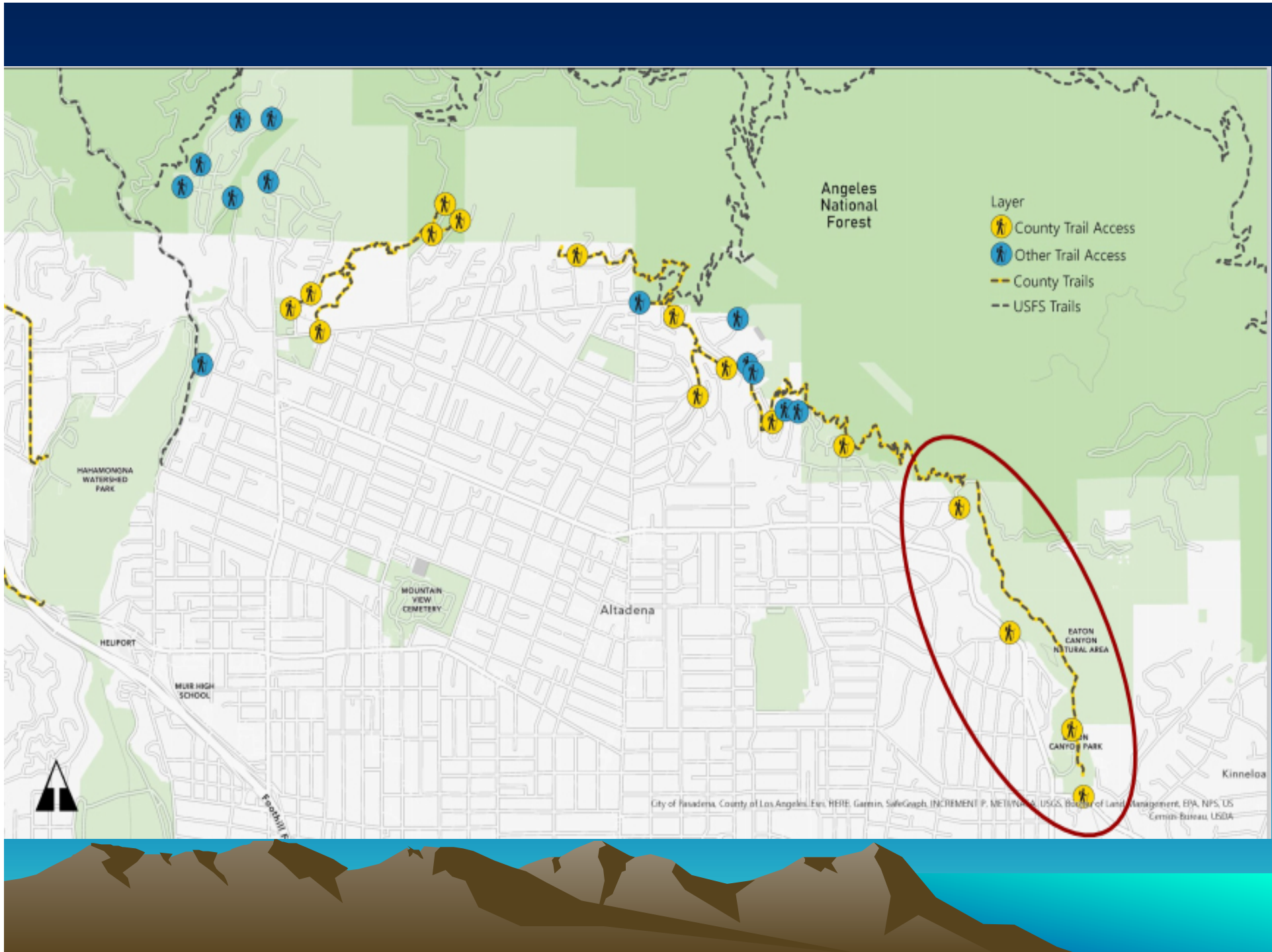
Resource Needs

- Programming
- Habitat restoration
- Staffing
- Deferred maintenance



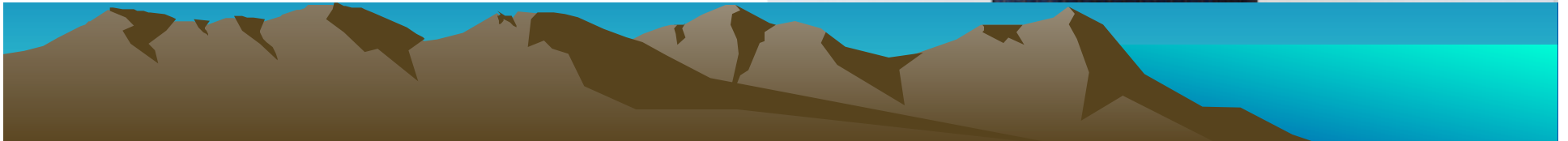
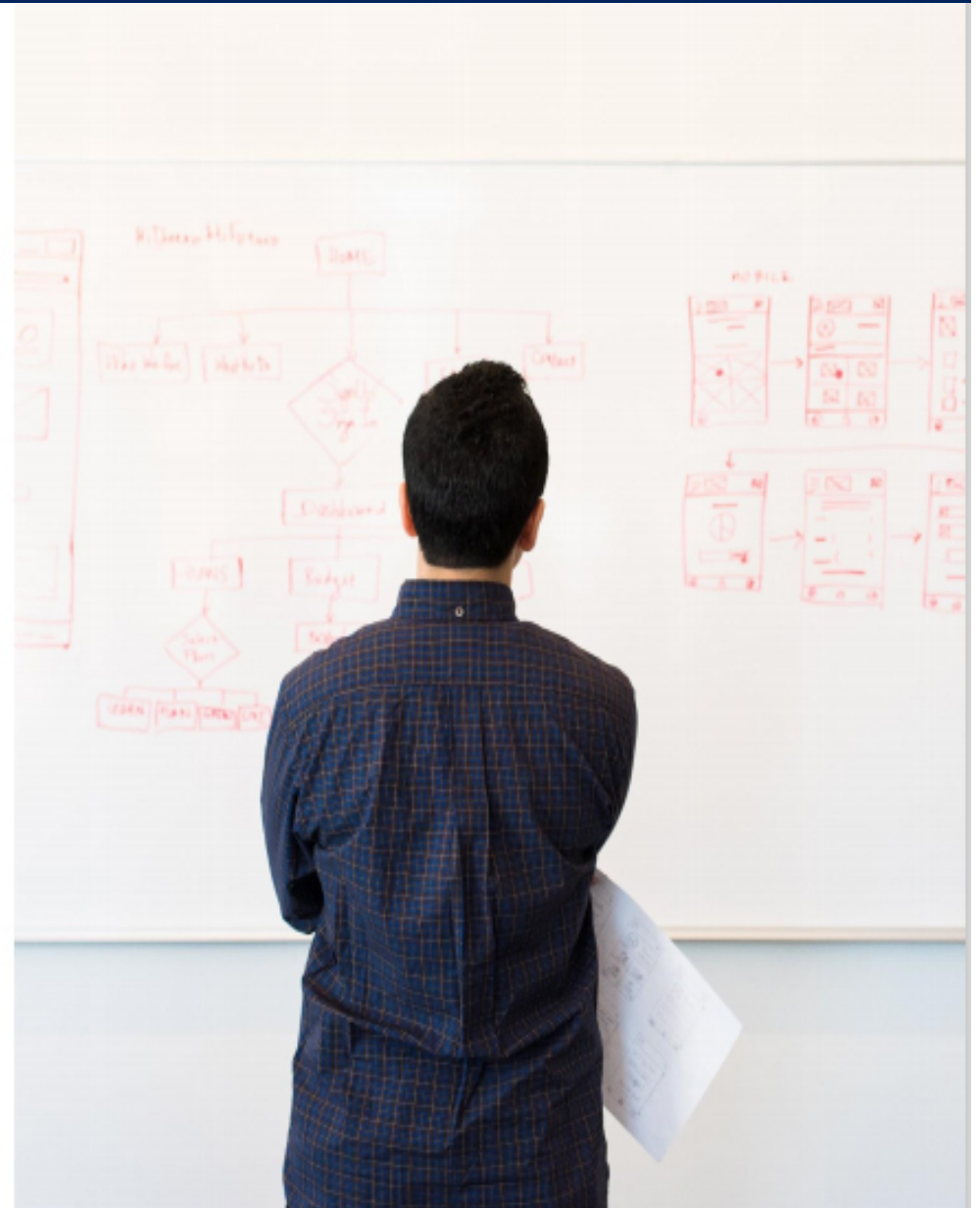
Photo by Mike Baird





Next Steps

- Summarize the responses we have received from the community
- Present the information to executive management
- Develop a draft plan to present to the public for additional feedback





Questions or comments?

LOS ANGELES COUNTY | DEPARTMENT OF PARKS AND RECREATION | MARCH 23, 2021



Trail Access and crowding during Covid

Jonathan Gonzalez, Senior Civil
Engineering Assistant
Los Angeles County Public
Works





Public Works
LOS ANGELES COUNTY

Traffic Safety and Mobility Division
Los Angeles County Public Works



Public Works' Role Relating To Parking Restrictions

Public Works' role in responding to parking restrictions include the following:

- Respond to requests for on-street parking restrictions and related traffic concerns
- Review locations and conduct parking demand assessments
- Work with community on requested restrictions (meetings, petitions)
- Process the adoption of traffic regulations for parking restrictions
- Implement parking restrictions, signs and curb markings
- Coordinate with the Sheriff's Department for enforcement

Parking Restriction Options



No Stopping Anytime



No Parking Anytime



Permit Parking



Time Limit Parking



Loading Zone



Preferential Parking District



Temporary Parking Restrictions

Parking Restriction Evaluation Process

PW evaluates parking restrictions with public safety being at the forefront

The typical study procedures are as follows:

- **General Information & Background** is gathered in regards to the request
- **Existing Field Conditions** are evaluated onsite and measurements are taken
- **Request** enforcement of existing parking restrictions
- **Community Sponsored Petitions** are normally used to gather public support for new parking restrictions
 - A $\frac{3}{4}$ majority is needed to implement a new parking restriction
- **Findings & Recommendations** are carried out

What Has PW Done At The Various Trailheads In Altadena?

Pinecrest Drive:

- Temporary parking restriction due to park closure during COVID-19
- Permanent no parking on the east side of the roadway for more than 2 hours weekdays, no parking anytime weekends (near Pinecrest entry gate)
- Permanent no stopping anytime on the west side of the roadway (near Pinecrest entry gate)

Chaney Trail:

- Temporary parking restriction due to park closure during COVID-19
- Permanent parking restrictions along the east side of the roadway from Loma Alta Drive to LA County Boundary
- Permanent parking restrictions along portions of the west side of the roadway

Tanoble Trail:

- Temporary parking restrictions during holidays

Cobb Estate:

- Temporary parking restrictions during holidays

Q&A

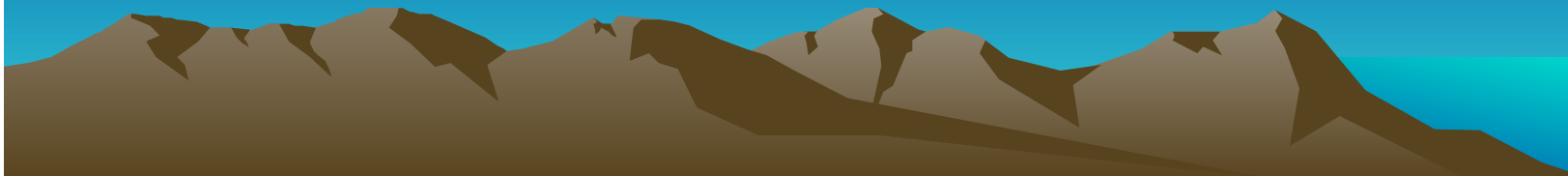
Jonathan Gonzalez
Traffic Safety & Mobility
Senior Civil Engineering Assistant
(626) 300-4792
Jogonzalez@dpw.lacounty.gov

- **7:42 PM – 8:02 PM**
Wildlife Bears in Altadena
(Wildlife Watch, Keep
Them Wild!)

Rebecca Barboza -Wildlife Biologist
California Department of Fish and Wildlife
South Coast Region

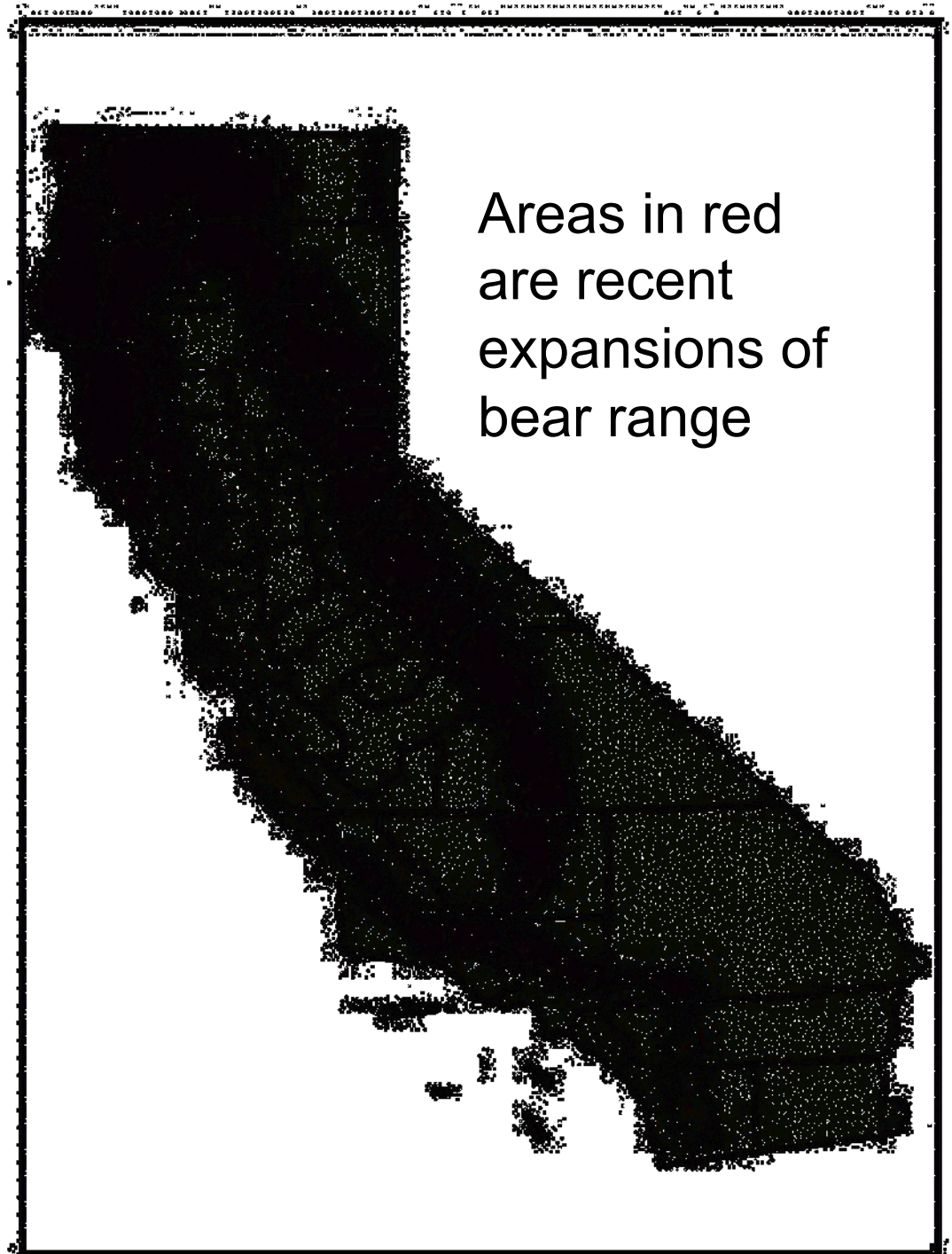


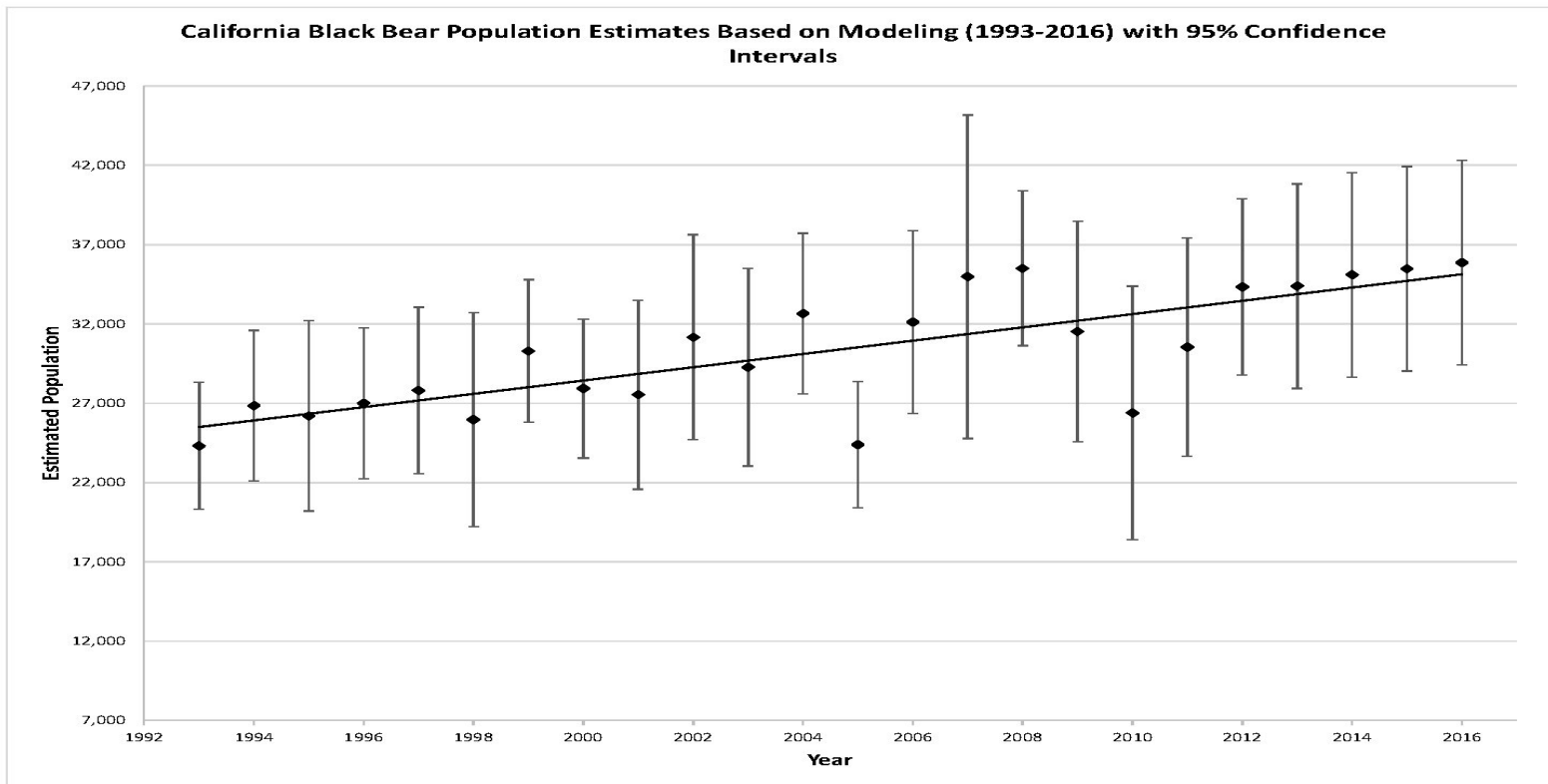
Living with Bears



Black Bear Distribution

- American Black Bear – *Ursus americanus*
 - Historically northern CA
 - Currently inhabit all mountainous areas
- California grizzly – extirpated 1922
- Gradual expansion southward
- Recent expansion in recent years





- Steady increase over 30-35 years
- Conservative estimates (hunted individuals)
- 1990's estimates 400-500 adult bears in ANF
 - 5% rate of increase since 1970's



Morphology

Body Size

- Length or height 5'-6'

Weight

- up to 600 lbs.

Age

- 25-30 years

Coat Color



Reproduction

Breeding

- Early summer
- Delayed Implantation
 - Optimal breeding period
 - Physiological adaptation to body condition
- Insufficient fat reserves
 - Spontaneous abortion
- Sufficient fat reserves
 - 2-5 cubs
- Human food sources can facilitate local population increase



Reproduction

- Underdeveloped fetus mid-winter
 - matures in the den
- Emerge with sow in spring
- Weaned by mid-summer
- Cubs stay with sow until they are 18 - 20 months old
 - Social and foraging behavior
 - Can be independent at 6 months



Denning Behavior

- Fattening in the Fall
- Generally den in December
- Southern California is unique
 - Mild winters, abundant food sources
 - “Seasonal torpor” – not true hibernation
 - Most bears retreat; reduced activity
 - January or perhaps not at all
 - Sows giving birth will generally den



Baby
bears
weigh less
than a
pound.



Fully grown
within five
years



Food Habits

- Omnivorous
- Generally vegetarian
 - Commonly consume animal protein
- Varies seasonally with availability
- Increase consumption of human food during late summer and fall
- “Wild” vs food-conditioned

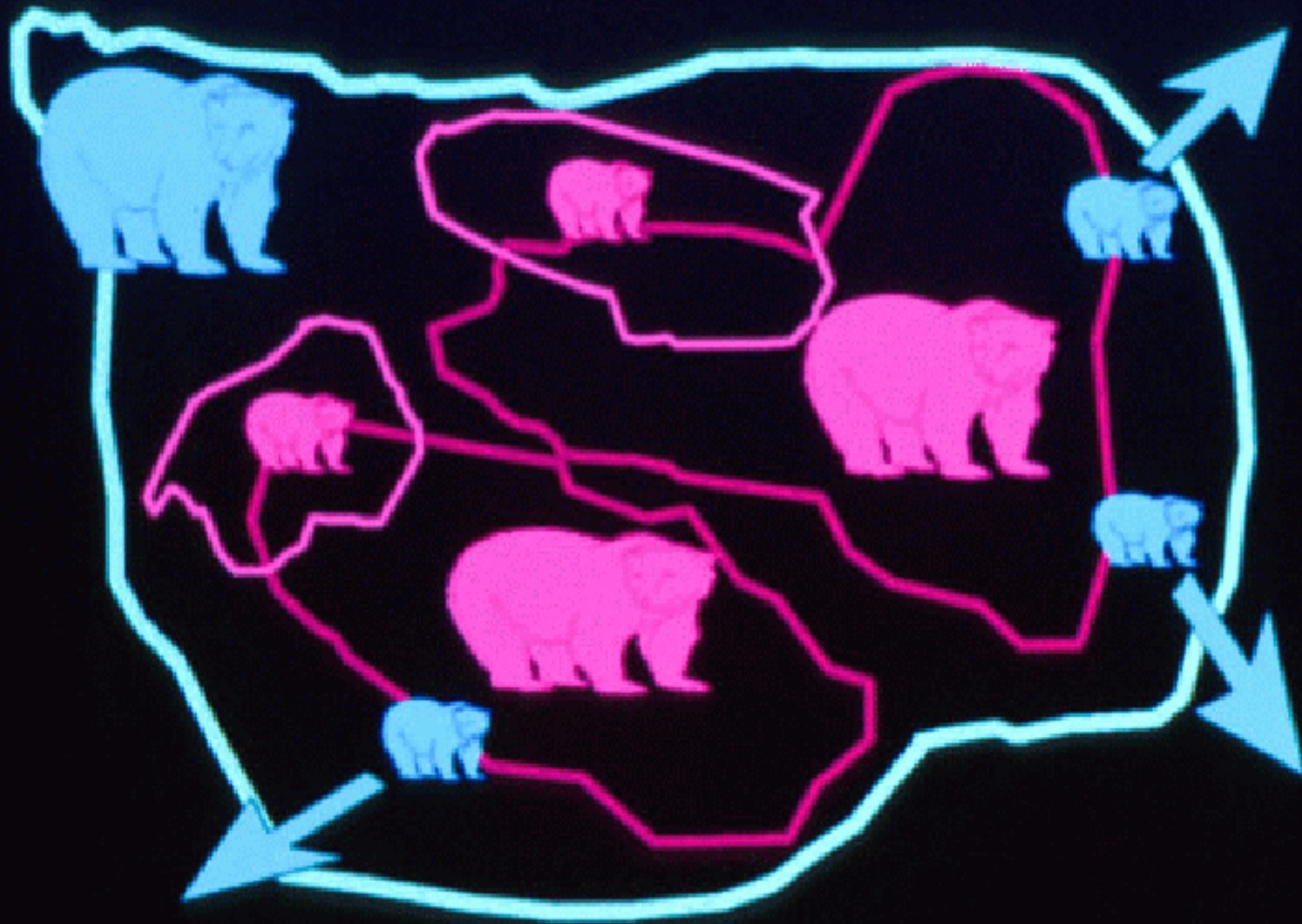


Home Range

- Adult males and non-reproductive females are generally solitary
- Home range size varies
 - sex, age, population density, food availability
 - 3 -11 sq mi in the National Forest
 - Smaller home ranges in the urban interface
- Movements of 100+ miles documented
 - Particularly when relocated



BLACK BEAR HOME RANGES



Habitat Requirements

- Variety of Vegetation Types Used
 - Conifers
 - Hardwoods
 - Brush
 - Meadows







Incident response



- Steward agency for wildlife in CA
- Reports for sightings, property damage, incidents
 - Remotely
 - on-scene
- Lead agency for public safety incidents
- Mandated to maintain healthy populations
- Goal of statewide bear policy
 - Tools to minimize conflict
 - Avoid population impacts

An informed public is
the most effective
solution to most
problems related to
bears!



Never Feed Bears

Intentionally...



...or unintentionally



Consequences of feeding bears

Food-conditioned bears that have caused property damage and/or killed pets or livestock may be killed under the State's Depredation Policy and State Laws



Bear-Resistant Garbage Cans



Predator-Resistant Chicken Coops



Human-Bear Conflict Prevention Tips

- Install or request bear-resistant garbage cans
- Freeze wet garbage (meat, bones etc) until pick-up
- Keep garbage inside garage or secure building until pick-up
 - Disinfect garbage containers weekly with bleach or ammonia
- Clean BBQ grills regularly
- Keep pet food and water indoors
- Harvest tree fruits (avocados) regularly, pick up fallen fruits

Bears and other wild animals are attracted to anything edible and smelly. It is against the law to feed bears.



Feeding Wildlife is Prohibited

- California Code of Regulations, Title 14, Section 251.3
- Los Angeles County Code Section 10.84.010
- Some cities' Municipal Codes



What to do when you encounter a bear

- In Close proximity
 - Back off slowly
 - Talk in a low, quiet voice
- In Open space
 - Look at the bear
 - Make yourself look bigger
 - Make loud noises
 - Throw objects
- Never turn and run!
- If attacked, fight back! Do not “play dead”



CDFW Policies, Regulations, and Law Enforcement



California Department of Fish and Wildlife Relocation Policy



DFG Relocation Policy

- Nearest available habitat (<1 mile)
- Extraordinary circumstances > 25 miles
 - Deputy Director approval
- Does not fix the heart of the problem
 - Food and attractants



Bear Depredation Policy

Category 1: No-Harm-No-Foul

- Wander in
 - Naïve to humans
 - Food not confrontation
 - Juvenile males
- Wrong place; wrong time
- Give it space and time to leave
- Haze or move to nearest habitat



Bear Depredation Policy

Category 2 – Habituated; nuisance bear

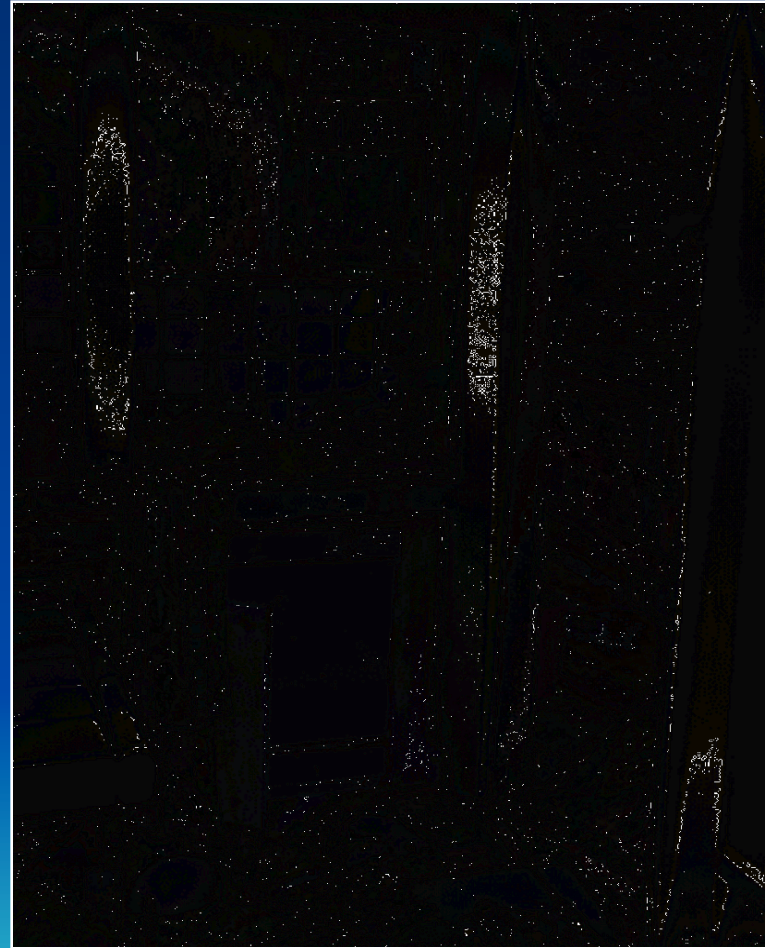
- No property damage
- Recommend corrective measures
- Bear-resistant garbage cans
- Removing other attractants
 - Pet foods
 - Clean BBQ
 - Koi ponds
 - Chicken Coops
 - Birdfeeders
- Fencing
- Hazing



Bear Depredation Policy

Category 3 - Property damage occurs

- Hazing no longer effective
- Corrective measures
- Depredation permits issued
 - Landowner takes bear
 - Strict firearms ordinances
- Proper management of attractants early on can prevent this situation
 - That is our goal!



Public Safety Threat?

Animal Behaviors Guide Our Decisions



Imminent threat means there is a likelihood of human injury based on the totality of the circumstances



The mere presence of wildlife does not necessarily pose an imminent threat to public safety



- Imminent threat means that someone WILL be injured
 - Immediate euthanasia
- With space and time they will leave
- Can be hazed without mass response
- Not inherently aggressive toward humans

Public Safety Incidents

Law Enforcement determines public safety incidents

- CDFW Wildlife Officer
- Sheriff, Police
- Park Ranger
- Forest Service Enforcement



Wildlife Watch encourages cities and other agencies to prepare comprehensive wildlife management plans which include public education efforts that will change human behavior.

- Establishes a comprehensive, integrated management strategy
 - Minimize human-wildlife conflicts
 - Improve the quality of life in urban settings.
- Conservation and ecological principles
- Agency and community leadership coaching
- Respect for wildlife and one another.



Public Information

- CDFW Web Page:
 - www.wildlife.ca.gov



Questions?



Questions?



Next ACONA Meeting

May 25 2021

