

Altadena Coalition of Neighborhood Associations (ACONA)

Let's keep Altadena
*"The best neighborhood in LA
County!"*

January 25, 2022



Agenda for Tonight's Meeting

7:00 PM – 8:30 PM

- **7:00 PM – 7:02 PM Quick introductions and welcome**
- **7:02 PM – 7:22 PM SB -1383 -New compost law and rate increases**
 - **Ed Chen, Government Affairs Director ATHENS**
- **7:22 PM – 7:42 PM Slow down signs Public Works traffic**
 - **Matthew Dubiel, P.E., Senior Civil Engineer L.A. County Public Works**
- **7:42 PM- 8:02 PM Clean Power Alliance-the pros and cons of seeking services from them**
 - **Sherita Coffelt, Clean Power Alliance**
- **8:02PM –8:05 PM Smash and Grab crimes (Q&A)**
 - **Sheriff's Captain Jabari Williams**
- **7:55 PM – 8:30 PM Q&A**
- **8:30 PM Meeting end**

Your ACONA Team

- Elliot Gold
- Nina Ehlig
- Ellen Walton
- Diane Marcussen
- Captain Jabari Williams
- Holly Rundberg
- Carlotta Martin
- Sussy Nemer



SB -1383 -New compost law and rate increases

**Ed Chen, Government Affairs
Director ATHENS**





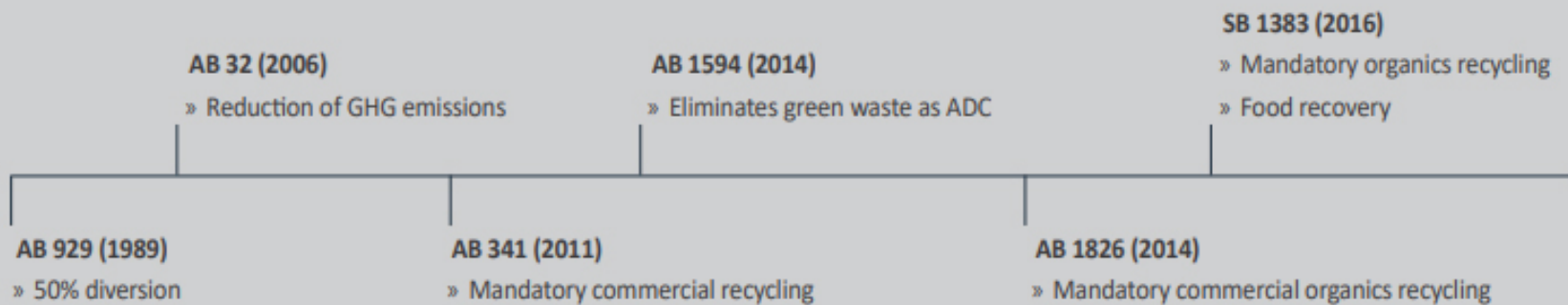
SB 1383: CALIFORNIA'S SHORT-LIVED CLIMATE POLLUTANT REDUCTION LAW

Fighting a Changing Climate by Recycling Organic Waste





CALIFORNIA LEGISLATIVE MANDATES





WHAT IS ORGANIC WASTE?

Organic waste such as food scraps, food-soiled paper, and yard trimmings emits 20% of the California's methane.



Food Scraps

- » Fruits and vegetables
- » Cheese, dairy, eggshells
- » Meat, bones, poultry and seafood
- » Bread, rice, beans, and pasta
- » Cut flowers and herbs
- » Coffee grounds and filters



Yard Trimmings

- » Grass clippings
- » Weeds
- » Leaves and branches
- » Flower and hedge trimmings
- » Lumber, scrap wood, and plywood (not painted or treated)



100% Fiber-Based, Food-Soiled Paper

- » Food-stained paper
- » Napkins and paper kitchen towels
- » Paper egg cartons and pizza boxes
- » Paper packaging
- » Paper plates and cups (no plastic lining)



SB 1383 ENFORCEMENT & COMPLIANCE

Enforcement

City is required to adopt an ordinance mandating organics service for all, including inspection and enforcement mechanisms to ensure all trash generators recycle organic waste.

Compliance

- » Collection Program
- » Route Audits
- » Waste Characterizations
- » Outreach & Education
- » Data & Reporting
- » Procurement
- » Food Recovery Support

SB 1383 ENFORCEMENT & COMPLIANCE

Route Audits

- » SB 1383 mandates regular monitoring of collection routes, to observe contamination in waste streams
- » Athens can provide quarterly route reviews for commercial and residential sectors to monitor contamination
- » Perform hands-on visual check, document findings, and capture photos of the containers being audited



ROUTE AUDIT FORM

CONTAMINATION Y/N *

TYPE OF CONTAMINATION

CONTAMINATION %

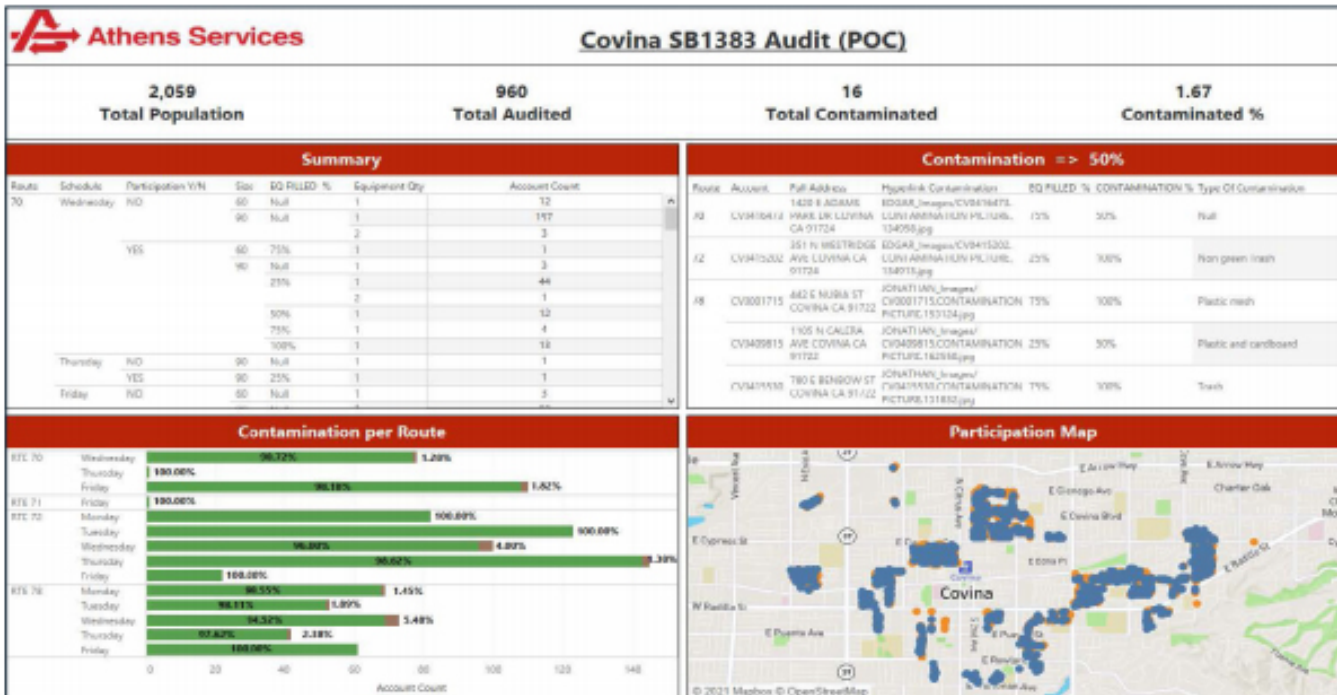
% 0 - +

CONTAMINATION PICTURE

EQ TAGGED Y/N

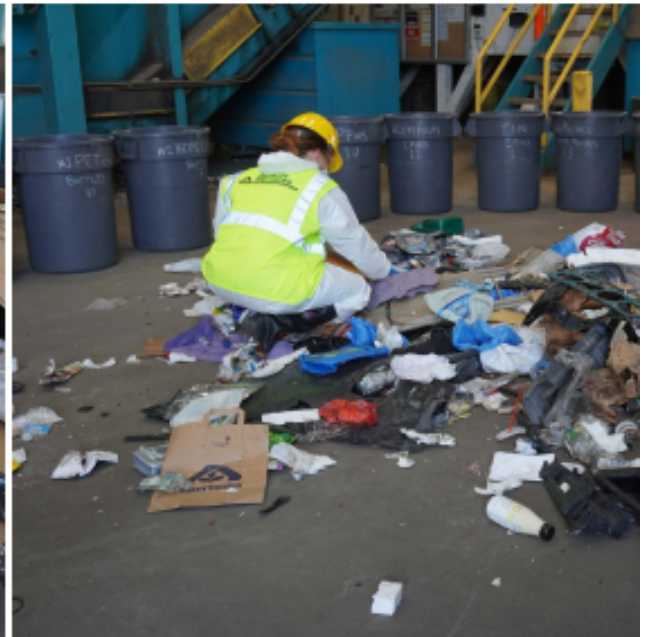
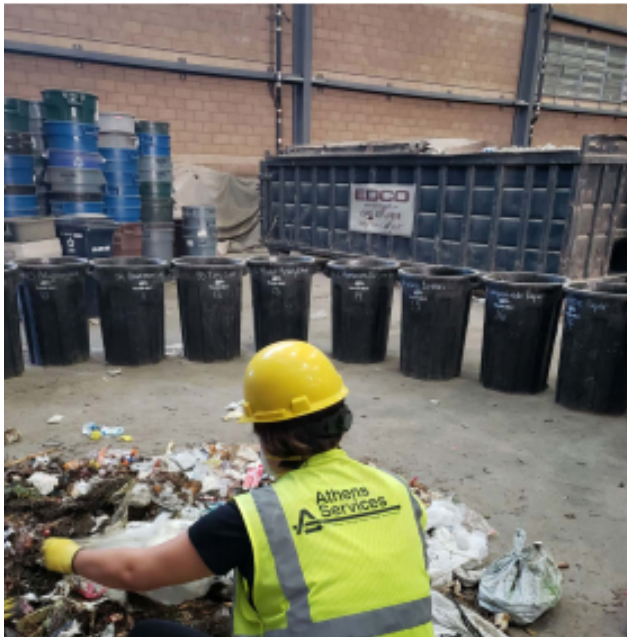
SB 1383

ENFORCEMENT & COMPLIANCE



SB 1383 ENFORCEMENT & COMPLIANCE

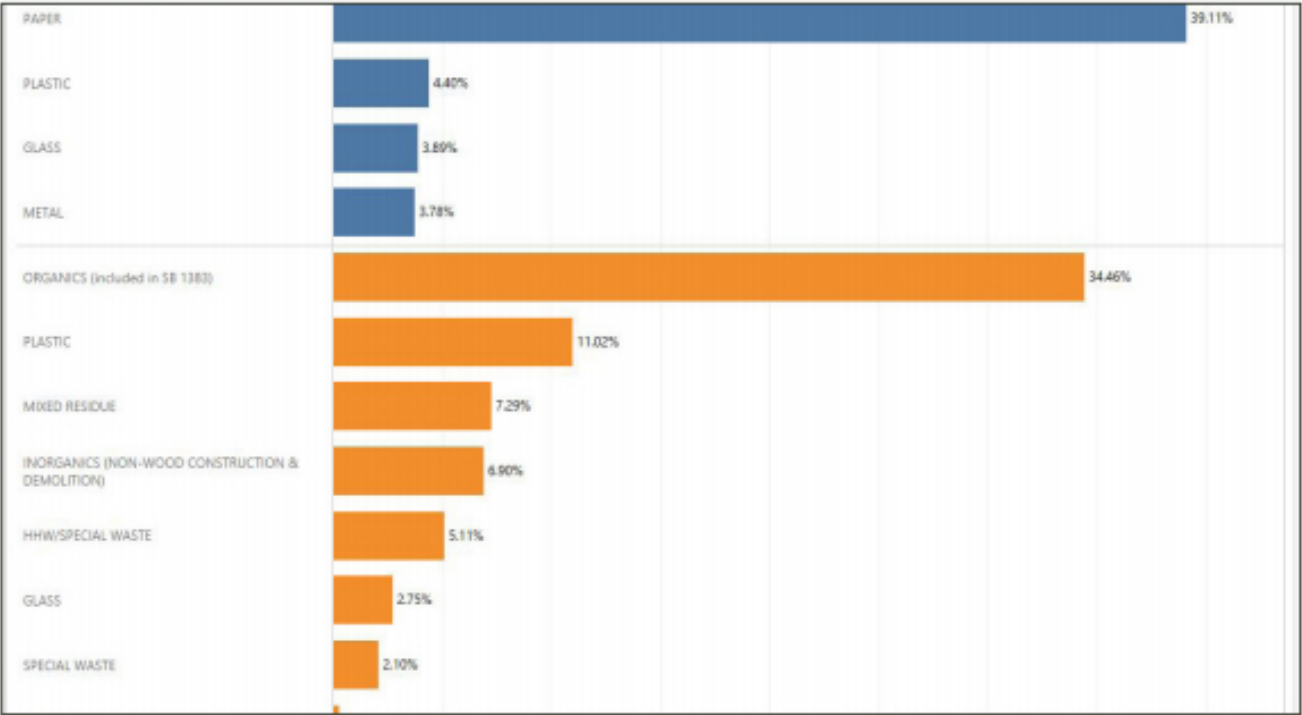
Waste Characterizations



SB 1383

ENFORCEMENT & COMPLIANCE

Waste Characterizations



OUTREACH AND EDUCATION

- » Crucial step to help drive the change in customer behavior
- » Athens can track, record, manage, and store the data gathered from these outreach efforts, to assist the City in reporting back to CalRecycle
- » What Goes Where Recycling Guide

OUTREACH EFFORTS:



In-person

- Presentations & Training
- Waste Assessments
- Community Events & Meetings



Digital/electronic

- Interactive Recycling Website (Recyclist)
- Instructional Videos
- Social Media



Print

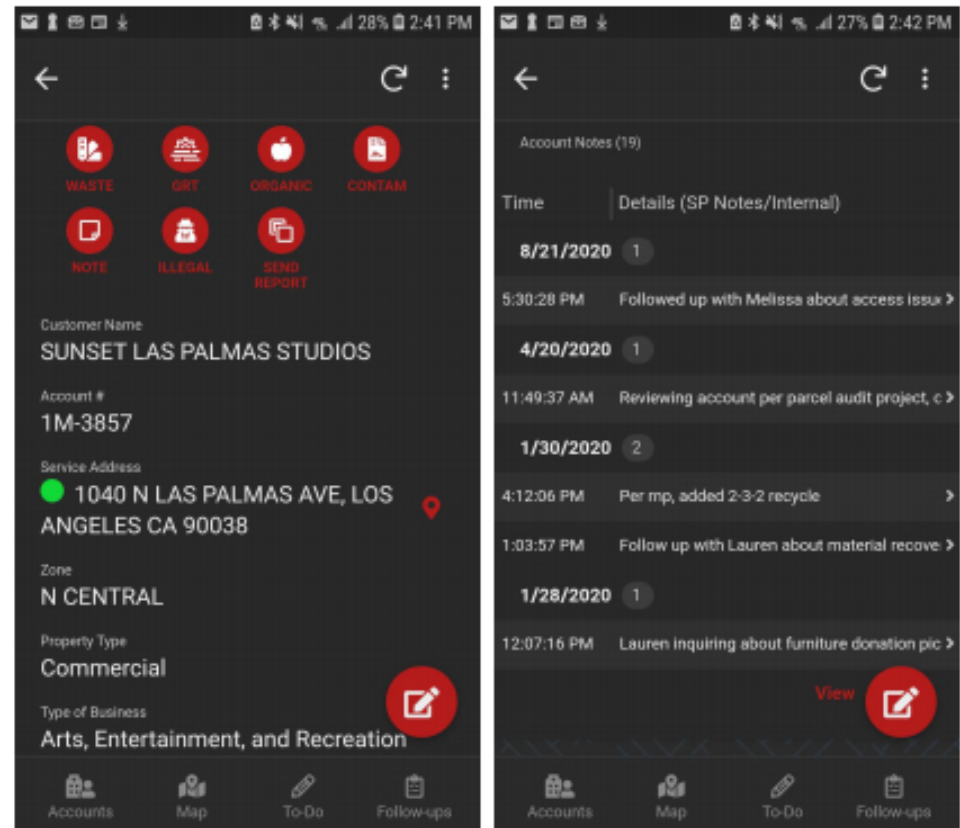
- Signage
- Container Labeling
- Newsletter Articles



SB 1383 ENFORCEMENT & COMPLIANCE

Outreach

- » App to help track customer interactions
- » Contact information, service and billing address, service levels, and routing information
- » Photos of bin locations, enclosures, and inside the containers





SB 1383 ENFORCEMENT & COMPLIANCE

Data & Reporting

Athens/City Portal will contain data relating to:

- » Residential Audits
- » Commercial Audits
- » Waste Characterizations
- » Contamination Fines
- » Food Recovery
- » Outreach Efforts
- » Customer Visits
- » Program Waivers
- » Customer Logs
- » Procurement



PROCUREMENT SUPPORT

- » SB 1383 requires jurisdictions to procure recycled organic products on an annual basis
- » Recycling Organics products are compost, mulch, or renewable natural gas
- » Athens can help cities comply through the use of renewable natural gas (RNG) utilized in our collection vehicles
- » Athens produces nutrient-rich 100% organic compost at its American Organics composting facility

FOOD RECOVERY SUPPORT

- » Food service establishments will be required to work with a food recovery organization
- » Starting 2022, Tier 1 edible food generators must arrange to recover the maximum amount of their edible food that would otherwise go to landfills and they must maintain food donation records
- » Athens will work with the City to identify Tier 1 and Tier 2 customers as well as identify potential food recovery partners


TIER 1 BUSINESSES

- Food distributors
- Wholesale food vendors
- Food service providers
- Grocery stores and supermarkets (10,000 square feet or greater)

TIER 2 BUSINESSES

- Hotels with at least 200 rooms and an on-site food facility
- Restaurant facilities (5,000 square feet or larger, or seating more than 250)
- Local education agencies with an on-site food facility
- Healthcare facilities with an on-site food facility and more than 100 beds
- Large venues and events with 2,000+ Visitors





READY TO PROVIDE **SB 1383** SUPPORT

- » Since the first recycling law in California, AB 939 was passed, Athens has helped cities meet its requirement
- » Now with SB 1383, Athens will also pave the way for cities to meet their new regulations requirements
- » We are well prepared for SB 1383 - We have invested and expanded our infrastructure by adding new technology that helps the environment and communities



Slow down signs Public Works traffic

**Matthew Dubiel, P.E., Senior
Civil Engineer L.A. County
Public Works**





Public Works
LOS ANGELES COUNTY

Los Angeles County Slow Streets Program

ACONA Meeting

January 25, 2022

Slow Streets Program Background

- May 26, 2020 - Board Motion
 - Develop guidelines for the creation of Slow Streets in the unincorporated County communities
 - Create a free or low-cost application process
- June 2020 – Research and Program Development
- July 2, 2020 – Launched Program



What are Slow Streets?

- **The Slow Streets Program**

- Promotes traffic calming
- Helps communities comply with physical distancing
- Encourages physical activity
- Part of the Vision Zero Traffic Safety Initiative



Example Slow Street sign

Slow Streets In Other Jurisdictions



City of Los Angeles:
"Slow Down
Slow Streets"



City of Pasadena:
"Slow Down
for your neighbors"



Credit: @jonobate

City of Oakland:
Road Closed

Slow Streets Designation Criteria

Criteria to be Met

- Slow Street application is received from a Sponsor
- The proposed streets are local **residential** streets
- The proposed streets are part of a network of neighborhood streets



Local Collector Street
(typically 40 feet wide)



Local residential street
(typically 34 feet wide)

Slow Street Equipment Current Design

2'x 3' Corrugated Plastic Sign
Mounted to Flexible Delineator Epoxied to the Street



Slow Street Equipment Previous Designs

2'x3' Foam Board Mounted to Flexible Delineator Epoxied to the Street
DAMAGE



Slow Street Equipment Previous Designs

**18"x 24" Corrugated Plastic Sign
Mounted to Flexible Delineator Epoxied to the Street**



Slow Street Equipment Previous Designs

2'x3' Foam Board Mounted to Type II Barricades
DAMAGE



Sponsor Responsibilities

Who can be sponsors?

- Residents
- Community-based organizations
- Nonprofits
- Other organizations

What do sponsors do?

- Communicate the purpose of the slow street designation with residents
- Notify Public Works if the signage or equipment is missing, broken, or vandalized
- Communicate with the County about the effectiveness of the Slow Street signs

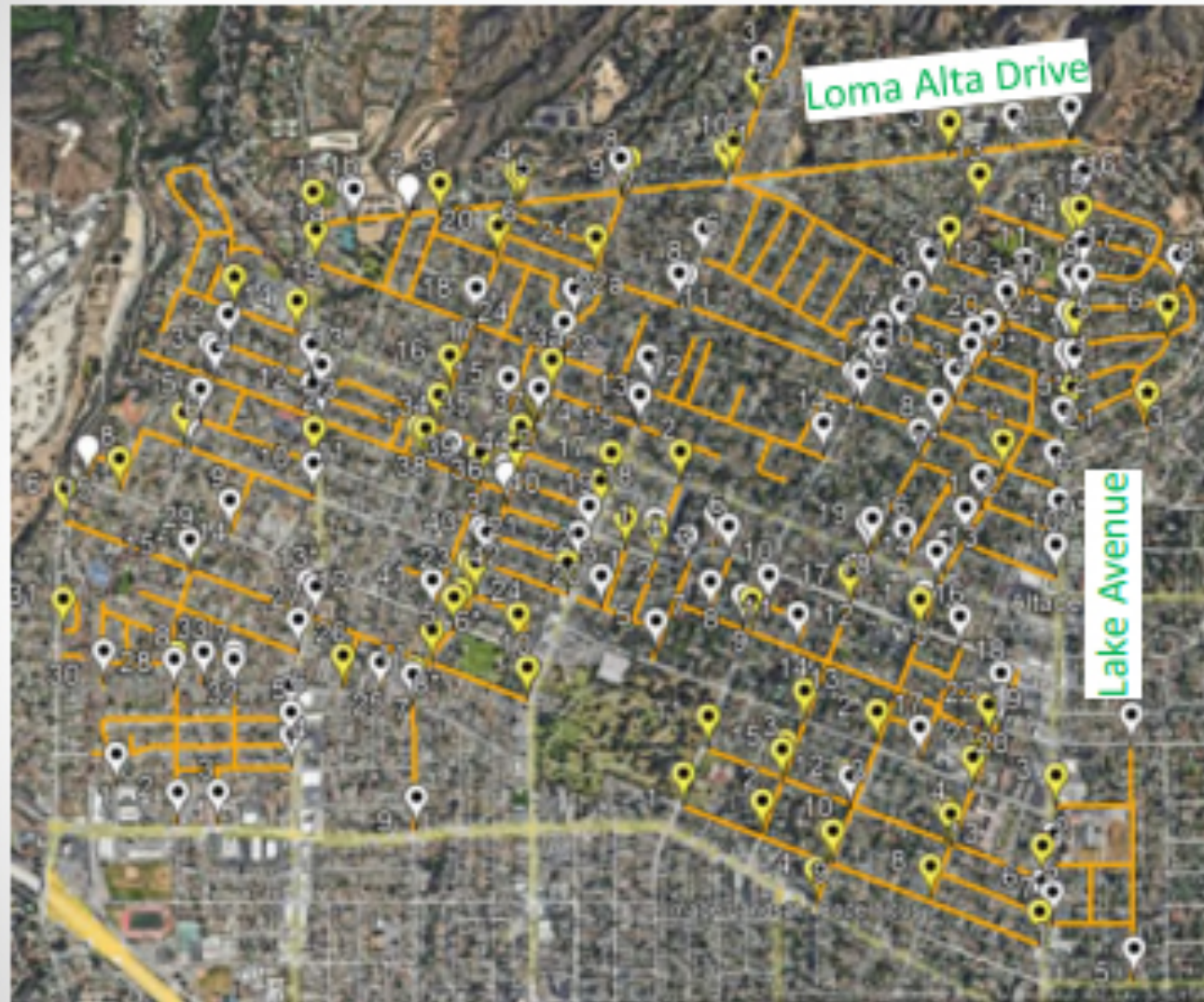
How to Apply



Application Submission

- A sponsor must submit an online application on our Vision Zero website, VisionZeroLACounty.com
- Applicants without internet access may call toll-free 1-833-VZ4-LACO for assistance.

Altadena Slow Streets Networks



Altadena Slow Streets Networks



Slow Street Stats

Los Angeles County Slow Streets Networks (as of January 19, 2022)

	Total Signs Installed	Total New Signs	Total Signs Replaced	Locations	Residents Served
Countywide	1522	734	788	675	51222
SD1	411	152	259	137	11111
SD2	195	103	92	104	9284
SD4	129	43	86	41	3761
SD5	787	436	351	393	27065
Altadena	597	303	294	213	19732

Slow Streets Looking Ahead



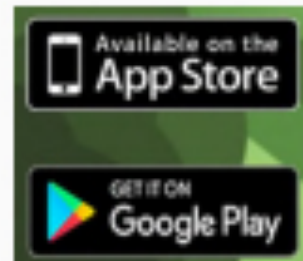
Contact Us

Traffic Related Requests

Traffic Signals, Stop Signs, Speed Humps, etc.

Website: <https://www.pw.lacounty.gov/contact/>
"Report a Problem"

Public Works App: "Los Angeles County – The Works"



Contact Us



VISION
ZERO
LOS ANGELES COUNTY



Matthew Dubiel, Senior Civil Engineer

mdubiel@pw.lacounty.gov

(626) 300-4795

Website: VisionZeroLACounty.com

Email: VisionZero@pw.lacounty.gov

Phone: 1-833-VZ4-LACO
(1-833-894-5226)

Questions?



Clean Power Alliance-the pros and cons of seeking services from them

**– Sherita Coffelt, Clean Power
Alliance**



Clean Power Alliance

Altadena Coalition of Neighborhoods Association

January 25, 2022



Agenda

- ⚡ About Clean Power Alliance
- ⚡ What is a CCA
- ⚡ How it works
- ⚡ CPA and Altadena (unincorporated LA County)
- ⚡ CPA Rates Comparison
- ⚡ Community Rate Reductions
- ⚡ Upcoming Rates Comparison
- ⚡ CPA Local Community Programs
- ⚡ Questions?



About CPA



- ⚡ Electricity provider offering clean, renewable energy at competitive rates
- ⚡ Empowers communities and gives customers the power of choice
- ⚡ A Community Choice Aggregation (CCA) program and non-profit entity formed through a Joint Powers Authority (JPA) made up of 32 participating public agencies

- Community Choice Aggregation (CCA) is a program that allows cities, counties, and Joint Powers Authorities to procure electricity for its communities.
- Joint Powers Authorities are legally created entities that allow two or more public agencies to jointly exercise common powers.

About CPA



- ⚡ Comprised of 32 public agencies across Ventura and Los Angeles Counties
- ⚡ Approximately 1 million customer accounts (3 million residents and businesses)
- ⚡ Largest CCA in California
- ⚡ 5th largest electricity provider in California
- ⚡ More customers receiving 100% renewable energy than any other utility in the nation

The Power of Choice

Start Making Your
Community Better



Lean Power

40% clean power

Support the Future of
Your Community



Clean Power

50% clean power

Invest in Your
Community and the
World

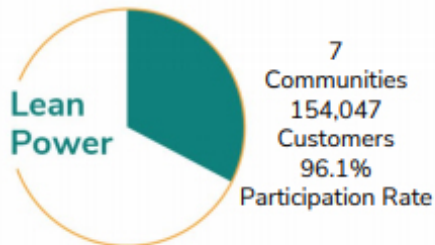


100% Green Power

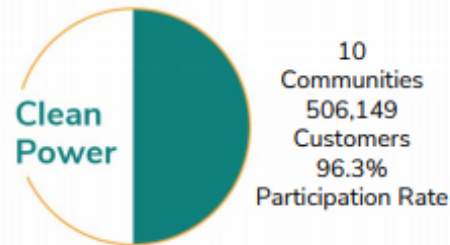
100% renewable energy.

CPA

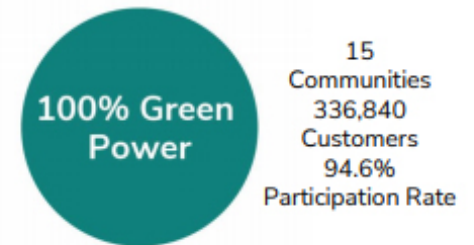
Customers are automatically enrolled at the default rate selected by their community



- ⚡ Arcadia
- ⚡ Camarillo
- ⚡ Hawthorne
- ⚡ Paramount
- ⚡ Simi Valley
- ⚡ Temple City
- ⚡ Westlake Village



- ⚡ Alhambra
- ⚡ Beverly Hills
- ⚡ Carson
- ⚡ Claremont
- ⚡ Downey
- ⚡ Hawaiian Gardens
- ⚡ Los Angeles County
- ⚡ Moorpark
- ⚡ Redondo Beach
- ⚡ Whittier



- ⚡ Agoura Hills
- ⚡ Calabasas
- ⚡ Culver City
- ⚡ Malibu
- ⚡ Manhattan Beach
- ⚡ Ojai
- ⚡ Oxnard
- ⚡ Rolling Hills Estates
- ⚡ Santa Monica
- ⚡ Sierra Madre
- ⚡ South Pasadena
- ⚡ Thousand Oaks
- ⚡ Ventura County
- ⚡ Ventura
- ⚡ West Hollywood

Low-income customers in 100% Green default communities receive 100% renewable energy at no extra cost.

Power Procurement – Reliable and Renewable

- ⚡ 21 long-term contracts signed to date, totaling 1,904 MW of renewable energy and 1,028 MW of storage
- ⚡ Diverse portfolio reduces more than one million tons of Greenhouse Gases (GHG) annually while improving system reliability
- ⚡ Approximately 2,500 jobs created
- ⚡ Preferences for projects that:
 - ⚡ Are in or close to CPA territory
 - ⚡ Show high levels of environmental stewardship
 - ⚡ Prioritize workforce development
 - ⚡ Bring benefits to disadvantaged communities



CPA

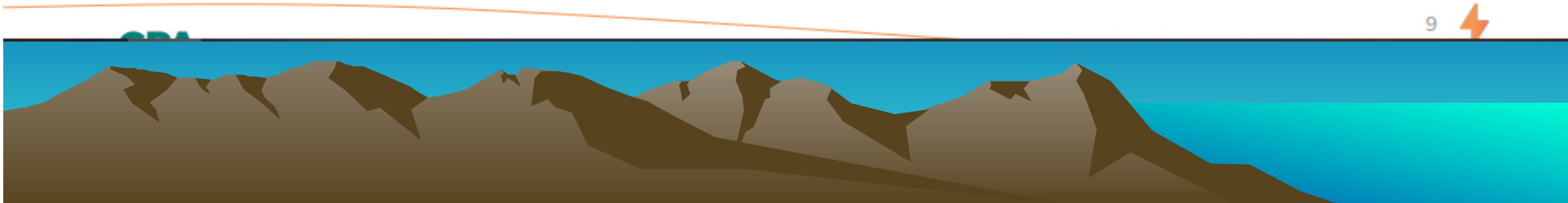


How it works

We work together to bring you access to the most sustainable energy available



⚡ Note that Clean Power Alliance is NOT an added fee; it simply replaces the SCE supply/generation charges on your bill.



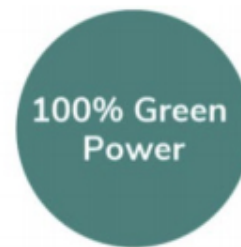
CPA and Altadena (unincorporated LA County)



Lean Power
40% clean power



Clean Power
50% clean power

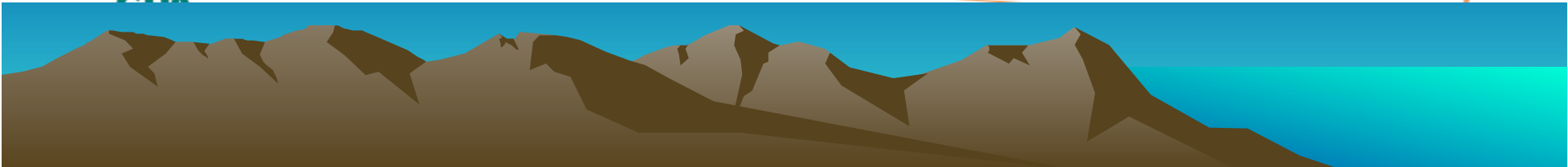


100% Green Power
100% renewable energy

- ⚡ February 2019 - Unincorporated LA County and Altadena join CPA
- ⚡ Current default rate is Clean Power
- ⚡ December 2021 - LA County Board of Supervisors voted to transition unincorporated LA County into Green Power default rate
- ⚡ October 2022 – Transition to Green Power will begin and occur over a 2-year period

Current Community Rates Comparison

2021 Schedule Domestic Comparison	 SOUTHERN CALIFORNIA EDISON®			 CPA CLEAN POWER ALLIANCE		
	SCE Base rate	SCE Green Rate 50% renewable	SCE Green Rate 100% renewable	CPA Lean Power	CPA Clean Power	CPA 100% Green Power
Generation Rate (\$/kWh)	\$0.09534	\$0.08697	\$0.07861	\$0.08234	\$0.08460	\$0.09213
SCE Delivery Rate (\$/kWh)	\$0.18462	\$0.18462	\$0.18462	\$0.18462	\$0.18462	\$0.18462
Surcharges (\$/kWh)	\$0.00000	\$0.01252	\$0.02503	\$0.03055	\$0.03055	\$0.03055
Total Costs (\$/kWh)	\$0.27996	\$0.28411	\$0.28826	\$0.29751	\$0.29977	\$0.30730
Average Monthly Bill (\$)	\$166.30	\$168.76	\$171.23	\$176.72	\$178.07	\$182.54



Community Rate Reductions

Power Charge Indifference Adjustment (PCIA) Impacts

- ⚡ The PCIA is dropping approximately 70% in 2022.
- ⚡ CPA customers will see bill reductions of ~6% beginning March 2022 with no action required by CPA.
- ⚡ The primary driver for the decrease in the PCIA is historically high energy market forward prices in 2022 which reduce the above market cost of SCE's PCIA portfolio.

Average Bill Residential	Current	As of 3/1/22	% Change
Lean	\$ 176.72	\$ 165.06	-6.6%
Clean	\$ 178.07	\$ 166.40	-6.6%
100% Green	\$ 182.54	\$ 170.87	-6.4%

Average Bill Small Business	Current	As of 3/1/22	% Change
Lean	\$ 235.73	\$ 221.81	-5.9%
Clean	\$ 237.81	\$ 223.89	-5.9%
100% Green	\$ 242.84	\$ 228.92	-5.7%

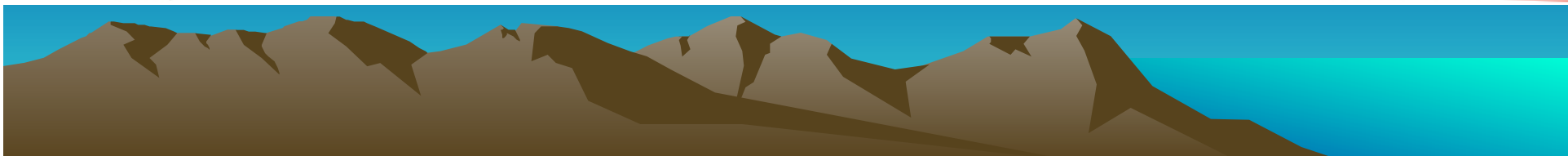


Upcoming Rate Comparison

- ⚡ SCE's generation rates are increasing by ~ 22% beginning March 2022.
- ⚡ CPA's 2022 rates likely going into effect in July 2022.

Residential Bills	June 2021 Typical Bill	Comparison to SCE	Dec 2021 Typical Bill	Comparison to SCE	March 2022 Total Bill	Comparison to SCE
SCE base rate	\$ 151.92		\$ 166.30		\$ 179.87	
Lean	\$ 154.96	2.0%	\$ 176.72	6.3%	\$ 165.06	-8.2%
Clean	\$ 156.10	2.8%	\$ 178.07	7.1%	\$ 166.40	-7.5%
100% Green	\$ 166.38	9.5%	\$ 182.54	9.8%	\$ 170.87	-5.0%

Small Business Bills	June 2021 Typical Bill	Comparison to SCE	Dec 2021 Typical Bill	Comparison to SCE	March 2022 Typical Bill	Comparison to SCE
SCE base rate	\$ 204.94		\$ 220.46		\$ 241.20	
Lean	\$ 207.93	1.5%	\$ 235.73	6.9%	\$ 221.81	-8.0%
Clean	\$ 209.70	2.3%	\$ 237.81	7.9%	\$ 223.89	-7.2%
100% Green	\$ 225.54	10.1%	\$ 242.84	10.2%	\$ 228.92	-5.1%



CPA Local Community Programs

Power Share

- ⚡ Eligible customers receive renewable energy and a 20% discount; (in addition to other discounts like CARE and FERA).
- ⚡ Approximately 50% of unincorporated LA County residential customers are eligible for CARE and FERA.
- ⚡ Program is currently active.



Power Response Incentives

- ⚡ Allows customers to save up to \$200 a year by reducing energy usage during times of heavy usage.
- ⚡ Open to all CPA customers.
- ⚡ Low-income customers may qualify for free smart thermostat.
- ⚡ Timing: 2022 - 2025



CPA Local Community Programs

Power Ready

- ⚡ Provides solar-generated backup during outages for critical facilities in our communities.
- ⚡ Each member agency is eligible to receive back-up power for critical facilities.
- ⚡ Status: MOU development underway; RFO released in early 2022; project opening 2023.



EV Charger Incentives

- ⚡ \$13.2 million (\$1 million from CPA and \$12.2 from state) funds to incentivize the installation of publicly available EV charging stations in Los Angeles County.
- ⚡ Up to \$3,500 available per Level 2 charger.
- ⚡ Multi-dwellings are eligible for additional incentives of \$2000.
- ⚡ Status: Project launching early 2022; Charger installation end of 2022.



Community Solar

- ⚡ CPA partners with solar developers and local communities to bring clean power to under-resourced neighborhoods.
- ⚡ Host sites generates 100% renewable energy.
- ⚡ Site sponsor and eligible residents in census tract within 5 miles of the project receive a 20% discount.
- ⚡ Status: RFO opened in late 2021; Project opening could occur as early as 2024.



Contact-

- **Sherita Coffelt**
 - scoffelt@cleanpoweralliance.org
- **Dalia Gomez, External Affairs Manager**
 - dgomez@cleanpoweralliance.org



Smash and Grab crimes

– Sheriff's Captain Jabari
Williams



COMMUNITY ALERT
Catalytic Converter Theft

WATCH & PROTECT YOUR CAR

Vehicles Targeted:

- Trucks/Trains
- Trucks/Trailers/Trailers
- Late model SUV's and Trucks

Catalytic converters contain precious metals which are extracted for profit. A catalytic converter is cut off with a power saw within minutes.

Always report any amount of property loss, even if the loss and only covering losses.

HELPFUL TIPS



Storage: Park your vehicle in a secured garage, driveway or fenced area.

Random parking: Park in a well lit area with motion detector lights or continuous lighting.

Wash or Catalytic Converter: The body may be washed (but no detergents) to clean around the converter.

Wash/Walk, Working or playing the converter with the fence able to see will help question the identity the converter is the best it is to remove.



GET SOME TIPS

CALL SOME TIPS

GET SOME TIPS

What is a catalytic converter? A catalytic converter is an emission control device that sits in the exhaust of most vehicles. The converter contains metals such as platinum and palladium. When it is removed, a rattling noise is heard once the engine is turned on.

If a crime is in progress, call 9-1-1.
 All other calls, please call our non-emergency line at (818) 248-6464.
 Los Angeles County Sheriff's Department - Executive Policy Station
 1014 North Biggs Ave., La Brea, CA 90024



Crescenta Valley Sheriff's Station, along with the Department's vehicle theft taskforce, invite residents to attend our Catalytic Converter Etch and Catch Event. The event will be on January 29, 2022 from 8:00 AM to 12:00 PM at Two Strike Park (5107 Rosemont Ave. La Crescenta, CA 91214).

This event is a part of a multifaceted strategy that the Department has implemented to address the uptick in catalytic converter thefts occurring across Los Angeles County.

All participants will have their catalytic converters etched with a unique identifying number. This etching will act as a theft deterrent. This will also provide law enforcement with valuable information should it be stolen and later located by law enforcement personnel during subsequent investigations.

This event is being provided at no cost to all participants. Reservations will be required. You can make your reservation through Eventbrite. The Eventbrite website will allow you to sign up for a specific time frame. Please arrive on time to your scheduled appointment. To sign up, click <https://www.eventbrite.com/e/crescenta-valley-sheriffs-station-to-host-catalytic-converter-etch-event-tickets-244603986107>

If you have any questions, please contact Sergeant John Gilbert at 818-236-4027.

Contact Information:

John Gilbert

Crescenta Valley Station

818-236-4027

jgilber@lasd.org



Questions?



Next ACONA Meetings

- March 22, 2022 Tuesday
- May 24, 2022 Tuesday
- September 27, 2022 Tuesday
- November 16, 2022 Wednesday

