

Altadena Coalition of Neighborhood Associations (ACONA)

Let's keep Altadena
*"The best neighborhood in LA
County"!*

March 27, 2018



Agenda for Tonight's Meeting

7:00 PM – 8:30 PM

- **7:00 PM – 7:05 PM Quick introductions and welcome**
- **7:05 PM – 7:25 PM Trash Pick Up Altadena- recyclables & bulky items**
 - Jessica Aldridge- Sustainability Manager Athens Services North Central Office
- **7:25 PM –7:45 PM Urban wildlife and Coyotes**
 - Jim Hartman, Deputy Agricultural Commissioner/Sealer, Integrated Pest Management Division, Los Angeles County Agricultural Commissioner
- **7:45 PM – 8:05 PM Altadena Community Standards Update (CSD) on Fences and Hedge Heights**
 - Richard Marshalian, Senior Regional Planner, LA County
 - Mark Herwick, Supervising Regional Planner, LA County
 - Alex Garcia, Supervising Regional Planner LA County
 - Barbara Childers, Principal Engineer LA County
- **8:05PM – 8:30 PM Open discussion Q&A**
- **8:30 PM Meeting end**

Your ACONA Team

- Elliot Gold
- Nina Ehlig
- Melody Comfort
- Sussy Nemer
- Captain Vicki Stuckey
- Sgt. Harvey “Sandy” Crosthwaite
- Holly Rundberg
- Carlotta Martin
- Dale Comfort
- Ellen Walton



**7:05 PM – 7:25 PM Trash Pick Up
Altadena- recyclables & bulky
items**

**– Jessica Aldridge- Sustainability Manager
Athens Services North Central Office**



Welcome to
ATHENS SERVICES



Altadena
and
Kinneloa
Mesa

Family-Owned,
Los Angeles Based Company Since

1957

in its 4th Generation

- Largest Hauler in LA City and LA County
- Six Operations Service Facilities
- Three Recycling Facilities (MRF)
- One Composting Facility
- San Bernardino Landfills and Transfer Stations Operator

Tradition + Innovation
SOLUTIONS



INDUSTRY MRF



SUN VALLEY MRF



COMPOSTING FACILITY



IRWINDALE MRF



A photograph showing several workers in white shirts and dark pants sorting through a large pile of waste on a conveyor belt at a recycling facility. The workers are wearing masks and gloves. The background shows industrial equipment and more workers.

YOUR LOCAL **ATHENS** TEAM

- ▶ Athens employs over **1,200 employees** in Los Angeles and surrounding areas.
- ▶ Athens has **over 300** employees residing in Los Angeles.
- ▶ **Over half** of Athens' drivers have more than 10 years of experience.
- ▶ Friendly and experienced drivers are **expertly trained** and held to the highest professional standards ensuring **safe and efficient** service, every day.

Video



Athens Services

<https://www.youtube.com/watch?v=eyfBgZOEj5w>

Altadena & Kinneloa Mesa

Residential - 3 Cart System

- Recycling & Trash – sorted at Sun Valley and City of Industry MRF
- Customer Service Line: 888-336-6100
- Bulky Item Service Line (direct): 855-557-1007



Athens Services™ © 2018. All Rights Reserved.

Education & Outreach

UPCOMING EVENTS

Compost Giveaway – April 14th
E-waste/Clothing Collection – May 19th

Yearly Events/Outreach

- Four quarterly newsletters
- Annual compost giveaway
- Bi-annual e-waste & clothing collection
- Annual Curbside Cleanup



2017 E-Waste/Clothing Diversion

May 20, 2017	Sept 16, 2017
E-Waste: 19,574 lbs	E-Waste: 9,733 lbs
Donated Clothes: 2,047 lbs	Donated Clothes: 2,000 lbs
Total Cars: 279	Total Cars: 167

Athens Services® © 2018. All Rights Reserved.

Bulky Item Pickup

NEXT CURBSIDE CLEANUP
Saturdays, June 9, 16, 23, 30 &
July 6
(depending on your day of service)

- **Participate in Annual Curbside Cleanup** (June/July)

- **Make a Request**
 - Schedule 24 hours in advance
 - Collections take place on Wednesdays
 - Place curbside (not in the street) by 6:00 am
 - Alleyways may need additional support
 - Call Athens Services at 855-557-1007, or complete a Request Services form and select “Bulky Item Pick-Up.”

- **Services Provided**
 - **Bulk items** (i.e. furniture & appliances) - unlimited quantities, 3x/year
 - **Bagged Refuse** - unlimited quantities, 4x/year
 - **Bagged or Bundled Green Waste** - unlimited quantities, 10x/year (securely tied together, no heavier than 45 lbs. and less than 4 ft.)
 - **Electronic Waste** - unlimited, on-call pickups per year
 - Additional requests are available for a fee.

DO NOT ACCEPT

- Automobile parts
- Batteries
- Bulbs
- Liquid waste
- Medical products
- Construction and demolition debris (including dirt, concrete, tile, drywall and rock, etc.)
- Hazardous waste
- Lumber or green waste that is loose or scattered

For temporary C&D services contact Athens.

Where Does It Go?

RECYCLING (no liquid or food)

- aluminum/tin foil & trays
- aseptic containers, juice boxes and milk cartons
- cans (aluminum, bi-metal, and tin)
- cardboard
- envelopes
- glass bottles and jars
- junk mail
- Magazines
- metal (all)
- newspaper
- office paper
- paperback books
- paper grocery bags
- clean plastic bags and film plastic (grocery, dry cleaning, packaging, etc.)
- plastic containers (1-7)
- shredded paper (bagged)
- wrapping paper (with no metal).

NO FOOD WASTE, LIQUIDS, ORGANICS, PACKAGING PEANUTS, PET WASTE, TRASH, OR YARD TRIMMINGS.



RECYCLABLES ONLY
SOLO RECICLABLES

NO LIQUIDS OR FOOD/NO LIQUIDOS O COMIDA

X NO! / ¡NO!

FOAM

Athens Services Your Zero Waste Partner (888) 336-6100 AthensServices.com

The poster features a blue recycling bin on the right. To its left, various items are shown: a crumpled plastic bag, cardboard boxes, a metal pot, a red can, glass bottles, and plastic containers. A red circle with a white 'X' is placed over a pile of food waste. Below the bin, several items are shown with a red circle and a white 'X' over them, indicating they are not recyclable: a pizza slice, a spray can, a can of beer, a can of foam, a smartphone, and a piece of wood.

Where Does It Go?

LANDFILL

The LANDFILL container is for non-recyclable trash considered to be no longer of use.

- bathroom waste
- candy bar wrappers
- ceramics/porcelain
- chip bags
- cigarette butts
- diapers
- disposable gloves
- foam to-go containers and cups
- food scraps
- juice pouches
- packaging peanuts
- palm fronds
- paper or boxes soiled with grease or food residue
- pet waste
- succulents and cacti
- yucca leaves

Athens Services™ © 2018. All Rights Reserved.

LANDFILL ONLY
SOLO BASURA PARA EL VERTEDERO

X NO! / ¡NO!

Athens Services Your Zero Waste Partner (888) 336-6100 AthensServices.com

Where Does It Go?

ORGANICS

GREEN WASTE ONLY

INCLUDE

- plant matter
- branches and leaves
- flowers
- grass
- tree trimmings
- yard trimmings
- non-treated wood (no larger than 4 inches in diameter or 4 feet in length)

DO NOT PLACE IN CONTAINER

- no building materials
- cacti, succulents, or yucca
- concrete
- dirt
- food scraps
- palm fronds
- pet waste
- sand
- stones
- trash

GREEN WASTE ONLY
RESIDUOS VEGETALES ÚNICAMENTE

***Scrap Wood:** No painted or treated wood. No larger than 4 inches in diameter and 4 feet in length.
***Restos de madera:** No se permite madera pintada o tratada. No se permiten piezas mayores de 4 pulgadas de diámetro y 4 pies de largo.

X NO! / ¡NO!

- No Pets:** No dogs or cats.
- No Soil:** No tierra
- No Palm Fronds:** No se permiten hojas de palma/palmera
- No Cacti, Succulents, or Yucca:** No se permiten cactus, suculentas o yuca
- No Rocks:** No piedras
- No Foam:** FOAM

Athens Services Your Zero Waste Partner (888) 336-6100 AthensServices.com

No Kitchen Food Waste At This Time

Proper Disposal

GOT PALM FRONDS?

- Do NOT place in organics or recycling
- **Proper Disposal**
 - Landfill cart
 - Bulky Item request (bundled at lengths no longer than 48 inches, no heavier than 45 lbs.)
- Report fallen palm fronds on the street
 - Removed by the County of LA Depart. of Public Works.
 - Request service: (626) 458-5100.
 - Hazards on the street: 1(800) 675-HELP (4357) or report it at www.dpw.lacounty.gov - click “Online Services, Request for Service, then Street Sweeping.”



Proper Disposal

Hazardous Waste Examples

Auto

Car batteries, Oil filters

Gardening

Herbicides, Pesticides

Medical

Pharmaceuticals, Sharps, & Syringes

Every Day Items

Batteries (all types), Fluorescent bulbs/tubes, Cleaning products, Some beauty products & cosmetics

Household Hazardous Waste

➤ Improper Disposal (prohibited by State and Federal laws)

- Illegal to dispose in trash, recycling, and/or organics
- Illegal to dispose into storm drains
- Groundwater hazard and puts garbage handlers at risk
- Contaminated containers will not be serviced

➤ Proper Disposal (free)

- County led events
- S.A.F.E Collection Centers
 - takes small business quantities by appointment only, (213) 485-2260
- **More info:** 1(888) CLEAN LA or visit www.CleanLA.com



Proper Disposal

Electronic Waste (aka e-waste)

➤ Unwanted electronic equipment

- Anything that:
 - Plugs into an electrical outlet,
 - Uses light bulbs or batteries, and/or
 - Contains electronic circuit board or wiring

Examples: computers, printers, TVs, VCRs, phones, stereos, gaming consoles, electronic accessories, etc

Proper Disposal**

- Schedule bulky item pick-up
- Bi-annual e-waste collection event
- Participate in annual curbside collection
- Deliver to S.A.F.E. Collection Center

****Athens does not collect: batteries, bulbs, medical products, hazardous or liquid waste.**

THE COUNTY OF LOS ANGELES, IN PARTNERSHIP WITH ATHENS SERVICES, BRINGS YOU...
FREE E-WASTE AND CLOTHING DROP-OFF

SATURDAY, MAY 19, 2018
9 A.M. TO 2 P.M.

LOMA ALTA PARK (Upper Parking Lot Behind Gym)
WEST LOMA ALTA DRIVE & NORTH SUNSET RIDGE ROAD,
ALTADENA, CA 91001

* Drive-Thru Event

* Altadena and Kinneloa Mesa residents only
(please bring bill or driver's license)



RAIN OR SHINE

ELECTRONICS ✓

Applies to consumer electronic equipment that is no longer wanted. E-waste can include computers, printers, televisions, VCRs, cell phones, fax machines, stereos, electronic games, and more...

CLOTHING & SHOES ONLY ✓

gently used, unsoiled and wearable.

NOT ACCEPTED ❌

****NO batteries, bulbs, medical products, toxic, hazardous or liquid waste will be collected.**
For proper disposal of Hazardous Household Waste please call 1(888) CLEAN LA or visit www.CleanLA.com**



877-764-5551

AthensServices.com



AthensServices.com

Altadena & Kinneloa Mesa

Proper Disposal

Sharps

➤ Sharps Waste is Considered

- Hypodermic needles
- Pen needles
- Intravenous needles
- Lancets
- Other devices used to penetrate the skin of people or animals

➤ Free one-gallon sharps container (up to four per year.)

- Order by calling Customer Service 888-336-6100
- Mailed free of charge with mail back instructions and a self-addressed envelope.



Bear Barrels

➤ Must Qualify:

- Live in bear problem area
- Close to mountains
- Route Supervisor to review

Quick Tips for Homeowners

- Install or request bear-resistant trash carts
- Freeze wet food (meat, bones, etc.) until pick-up
- Disinfect trash carts weekly
- Keep carts inside garage or secure building until the trash truck arrives
- Clean BBQ grills regularly
- Keep pet food and water indoors
- Harvest tree fruits (avocados) regularly, pick up fallen fruits



Bears Vs. Bear-Proof Garbage Can || ViralHog



64,767 views

Personal Waste Foot Print

A Culture of Waste

“Throwaway Society”

Solid Waste = 4.62 *lbs/person/day*

Recycled = -1.15 *lbs/person/day*

Net Waste = 3.47 *lbs/person/day*

= 1,267 *lbs/person/yr*

USEPA 2007

CalRecycle 1990-2010 Avg.
Resident=10.7*lbs/person/day*



Personal Waste Foot Print

➤ Reduce

- Buy less, more meaningful, longer lasting
- Conserve water, energy, fuel, and resources
- Bulk and DIY

➤ Choose **reusables** - #NeverRefuseToReuse

➤ Buy **recycled content** and **recyclable**

➤ **Recycle right** – not “wish-cycling”

➤ **Get Active**

- Lead by example, teach others, be an ambassador
- Speak up, make demands, vote with your \$\$
- Join campaigns and volunteer



Disposable Cups are not recyclable
*U.S. consumes 400 mil cups of a coffee/day.
Equivalent to 146 Bil cups of coffee/yr.
Avg American office worker uses 500
disposal cups per year (coffee or not).
20 Million trees/year for paper cups.
4 paper cups = 1lb of CO2 emissions.*



Questions?

FREQUENTLY ASKED QUESTIONS

- What does the recycle sign mean?
- Does size matter like straws, lids, utensils?
- What's up with food waste collection/composting?
- What is contamination really?
- Difference between compostable vs. biodegradable?
- Is Zero Waste really 100%?
- **ANYTHING ELSE?**

“Meeting the needs of
the present generation
without compromising
the ability of future
generations to meet
their own needs”

Sustainability

Thank You

Jessica Aldridge

Sustainability Manager

aldridge@athensservices.com

8-381-4388



AthensServices.com

Urban wildlife and Coyotes

- **Jim Hartman-**
 - **Deputy Agricultural Commissioner/Sealer,
Integrated Pest Management Division, Los
Angeles County Agricultural Commissioner**



Los Angeles County Department of
Agricultural Commissioner/Weights and Measures

INTEGRATED PEST MANAGEMENT PROGRAM

Practicing the Biological Arts

Living with the Urban Coyote



Coyote Facts

Coyotes are a native mammal who have been know to exist in LA County for at least the last 46,000 years



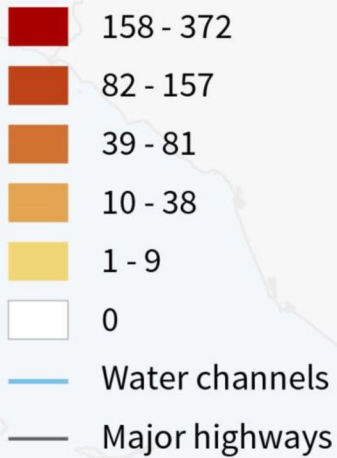
Coyote Facts

- Coyotes diet vary : small rodents, rabbits, raccoons, birds, berries, fruit, vegetables, garbage, compost, outdoor pet food and small unprotected pets
- They weigh in at between 15 and 40 pounds
- Young are born in mid to late Spring
- Litters are from 4 to 7 pups and the young will stay with the parents until late summer

Coyote Sighting Calls Per City

Los Angeles County,
Ca., 2007-2015

Total # of calls



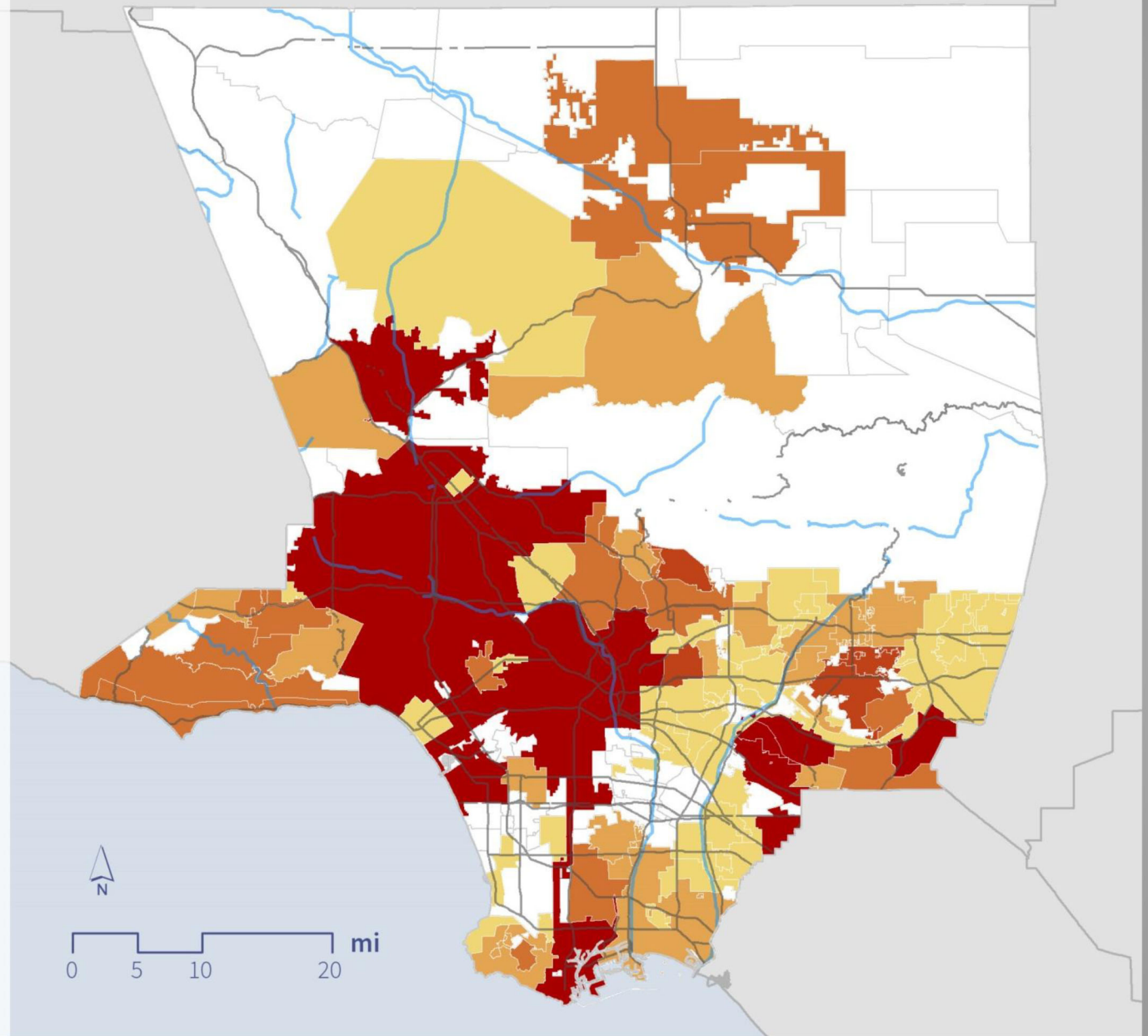
Date created: 1-26-2016

Map author: Monica Dimson, UC Cooperative Extension

Projection: California State Plane V

Call data via LA County Ag Commissioner, CA Department of Fish and Wildlife, and UC Cooperative Extension Orange County

Population data via U.S. Census Bureau (Census 2010)



Coyote Behavior

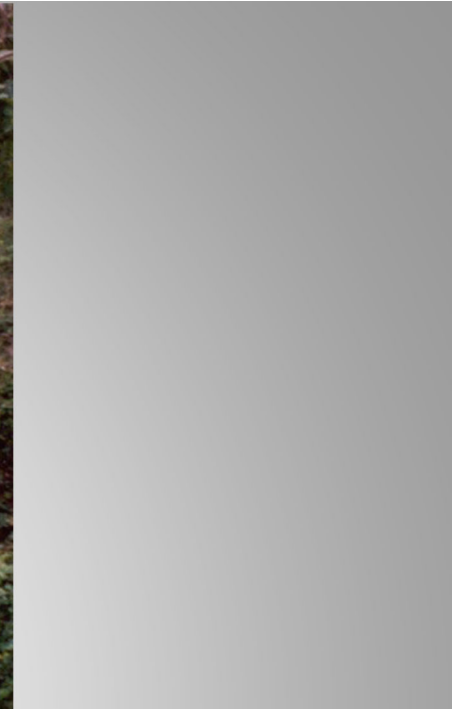
Coyotes are most active between dusk and dawn, however it is not uncommon to see them at any time during the day.



Coyote Behavior

Coyotes are shy animals by nature, however they are also extremely curious and can often be seen observing human behavior from what they consider a safe distance.





Coyotes are living in our neighborhoods



Intentional Feeding





Unintentional Feeding



Los Angeles County Code

Title 10 ANIMALS

Chapter 10.84 FEEDING OF CERTAIN PREDATOR ANIMALS

10.84.010 Providing food for certain rodents or predator animals prohibited

- A. Except as otherwise provided for herein, no person shall feed or in any manner provide food to a nondomesticated rodent or a nondomesticated mammalian predator.
- B. For purposes of this chapter:
 1. “Rodent” includes ground squirrel
 2. “Mammalian predators” includes coyote, raccoon, fox and opossum (Ord. 81-0029U § 1 (part), 1981)

Coyote Safety Tips

- Keep garbage cans closed and secure
- Keep small pets indoors especially at night and keep pet food indoors or remove when pets complete their meals outside
- Pick up fallen fruit and cover compost piles
- Put away bird feeders at night to avoid attracting rodents and other coyote prey

Coyote Safety Tips

- Clear brush and dense weeds from around your property
- Have a wall or fence at least six feet high around your backyard
- Enlist your neighbors as a neighborhood wildlife watch
- Teach children to never approach coyotes or other wild animals

If You See A Coyote

- Admire it from afar, but don't encourage them
- Never offer it food
- Don't turn your back, ignore or run from a coyote
- Carry a walking stick or noisemaker at night or during an early morning walk
- Keep your pets next to you on a leash if they are with you

If A Coyote Approaches You

- Make eye contact
- Make yourself as authoritative and big as possible
- Try to scare it and appear threatening
- Clap, shout, make loud noises, wave your arms
- Pick up small objects, such as a stone and throw it at the approaching coyote or spray it with water

If A Coyote Approaches You

- Do not turn your back on a coyote; to get away, face the coyote and carefully back away slowly

If A Coyote Attacks

Call 9-1-1 if a coyote or other wild animal attacks or threatens to attack a human

If a person is bitten, call the California Department of Fish and Wildlife to report the incident

Who to Contact

Los Angeles County Department of Agricultural
Commissioner/Weights and Measures
Integrated Pest Management Division

(626) 575-5462

acwm.lacounty.gov

COUNTY OF LOS ANGELES

Department of
Agricultural Commissioner /
Weights & Measures

acwm.lacounty.gov

INTEGRATED PEST MANAGEMENT
(626) 575-5462

Headquarters Office
12300 Lower Azusa Road
Arcadia, CA 91006
Voice: (626) 575-5471
Fax: (626) 442-2847

South Gate Office
11012 South Garfield Avenue
South Gate, CA 90280
Voice: (562) 622-0402
Fax: (562) 861-0278


This information is available
in alternative formats.

For further assistance:
TDD (626) 575-5520
Voice: (626) 575-5471
Fax: (626) 442-2847

NOV 2013

Department of
Agricultural Commissioner/
Weights & Measures

COYOTES
OUR PERMANENT NEIGHBORS



COUNTY OF LOS ANGELES

Coyote Cacher

Welcome to Coyote Cacher

Dear Coyote Cacher,

Coyote Cacher is part of a research project with the University of California Cooperative Extension that aims to collect more information on coyote encounters in California. The information you provide will be used to help inform researchers of trends in human-coyote interactions. If you wish to participate in this survey, please see the survey below to answer some questions. Participation is voluntary. If you require more information about this process please contact Human-Wildlife Interactions Advisor Dr. Niamh Quinn at nmquinn@ucanr.edu at University of California Cooperative Extension, Orange County.



If you want to see where encounters are in your neighborhood, please click [here](#) for an interactive coyote encounter map.

<http://ucanr.edu/sites/CoyoteCacher/>

A Last Word.....

Remember, it is humans that have “taught” coyotes to associate us with food and it is only through our efforts that we can minimize human/wildlife conflicts.

Altadena Community Standards Update (CSD) on Fences and Hedge Heights

- Richard Marshalian, Senior Regional Planner, LA County**
- Mark Herwick, Supervising Regional Planner, LA County**
- Alex Garcia, Supervising Regional Planner LA County**
- Barbara Childers, Principal Engineer LA County**



Altadena CSD Update

Fences, Walls & Hedges



History/Background

Enforcement Moratorium

Altadena Vision Report

Altadena CSD
Update

Current
Altadena
Community
Standards
District

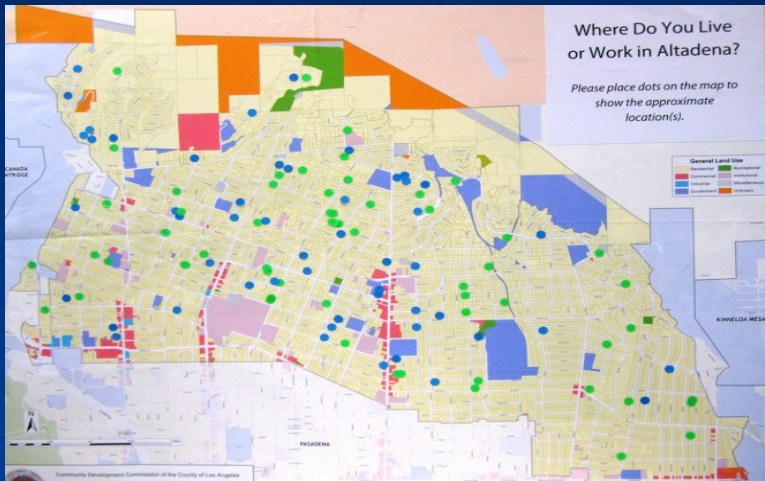


Moratorium

- Due to a proliferation of over-height fences, walls, and hedges, a moratorium on enforcement was enacted by the County.
- The Moratorium was to be in place until the CSD was updated.
- The updated CSD became effective on January 11, 2018.



Altadena Vision Report



- 2012
- Recommendation to revise regulations based on community desires
- More accommodating for existing over-height fences, walls, and hedges

CSD Update Process

- Many discussions with Public Works, CSD Committee
- Balances Community Character with Safety Needs
- Taller fences and hedges allowed in front yard

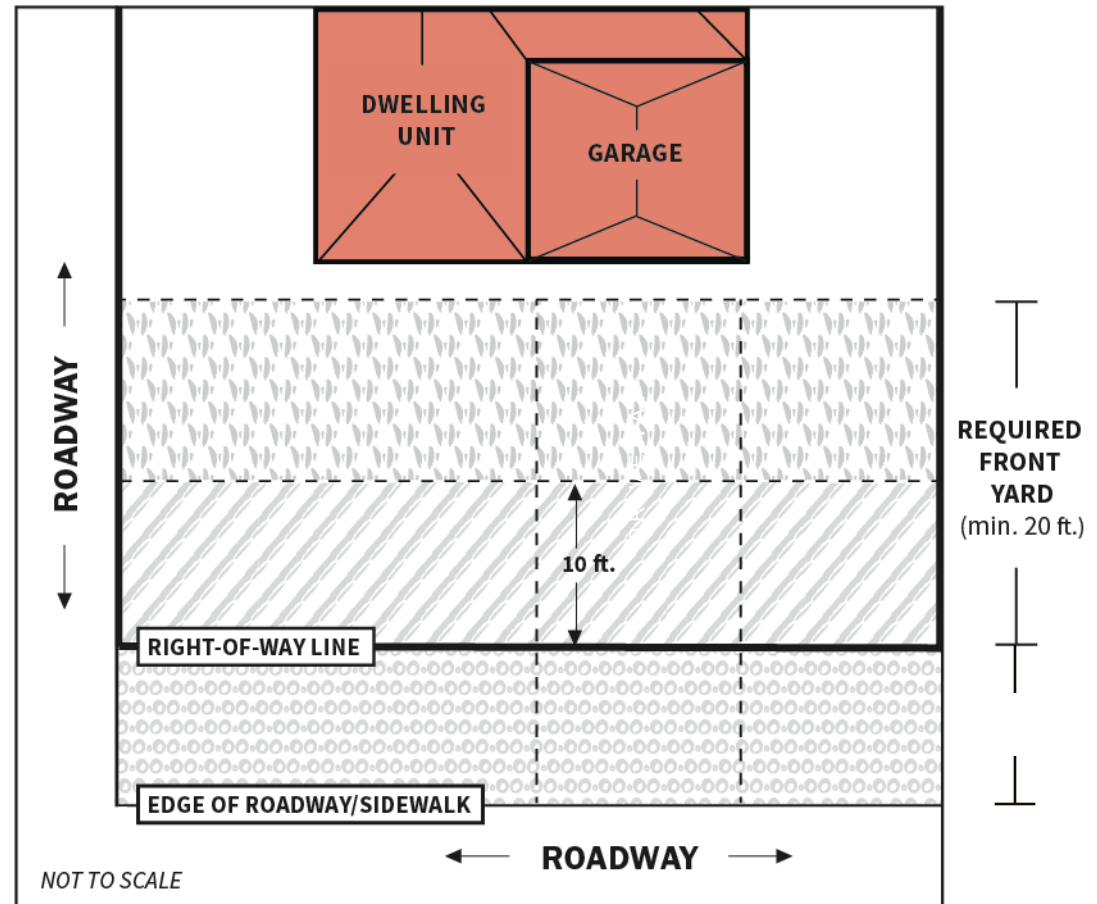


Summary of Standards: Corner Lots

 Between ROW Line and 10 feet back: 42 inches maximum

 From 10 feet back: 6 feet maximum

 Not permitted



Summary of Standards: Interior Lots

 Within Driveway Zone: 42 inches maximum

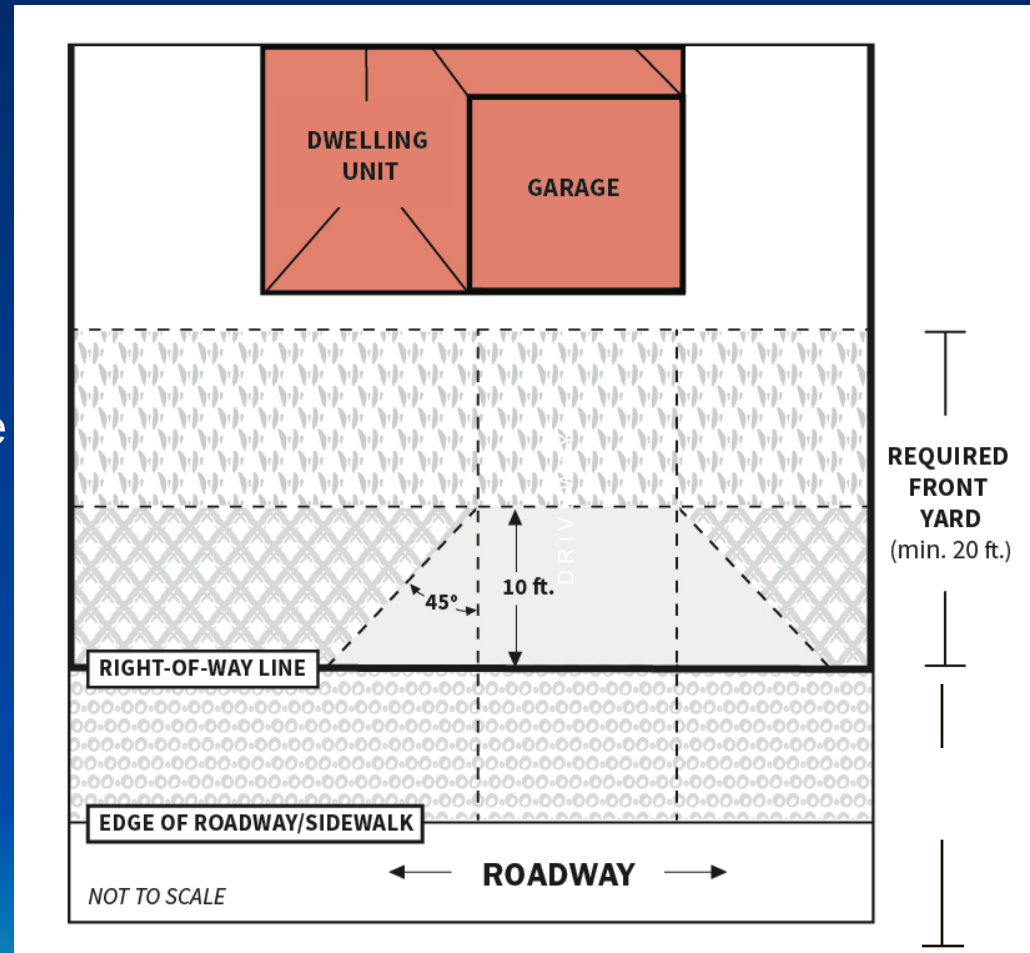
 Outside of Driveway Zone, between ROW and 10 feet back:

Walls and Fences: 6 feet maximum, any portion above 42 inches shall be 80% transparent or open and non view-obscuring

Hedges: 42 inches

 From 10 feet back: 6 feet maximum

 Not permitted



Fence, Wall & Hedge Registration



- Voluntary compliance registration program
- Limited-time registration period
January 11, 2018 – January 10, 2019
- Registration allows compliance to be secured by January 1, 2034

Registration Qualifications

- R-1 zoned properties only
- Fences, walls, and hedges in the front yard established prior to January 11, 2018 that do not meet CSD standards
- Property owner or representative with owner's consent

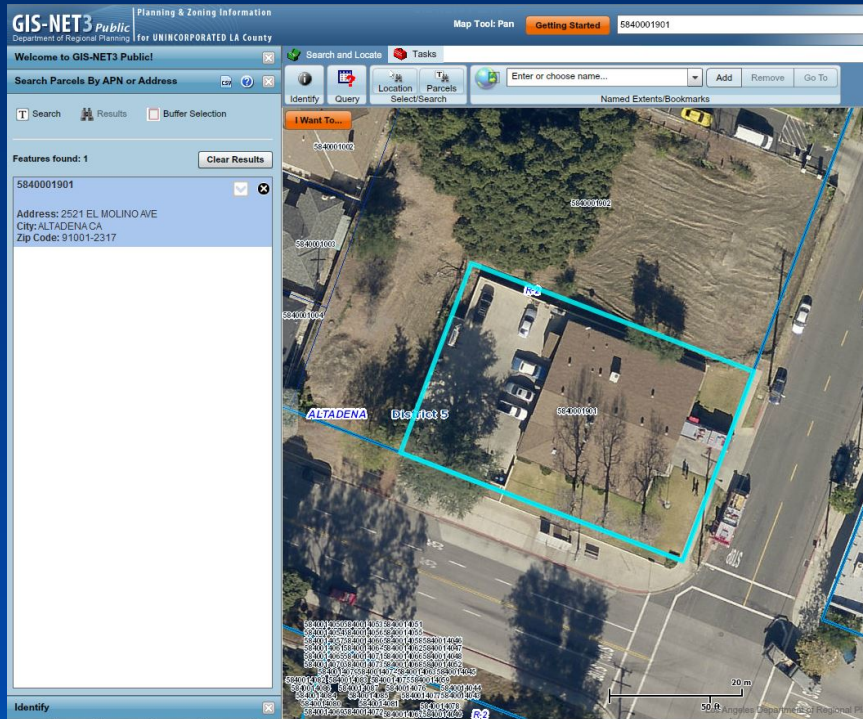


Registration

- Registration form available on DRP website <http://planning.lacounty.gov/apps>
 - Short one-page form
 - Simple site plan on 8.5” x 11”
 - Site photographs
- Online or in-person submission
- Free, no-cost registration



GIS-NET3



- <http://planning.lacounty.gov/gisnet3>
- Approximate location of property lines

DRP Zoning Enforcement

- Over-height fences, walls, and hedges could result in zoning enforcement actions
- Enforcement is complaint-driven
- Registration does not legalize the over-height fence, wall, or hedge
- Registration will protect property owners from enforcement of registered over-height fence, wall, or hedge until January 1, 2034

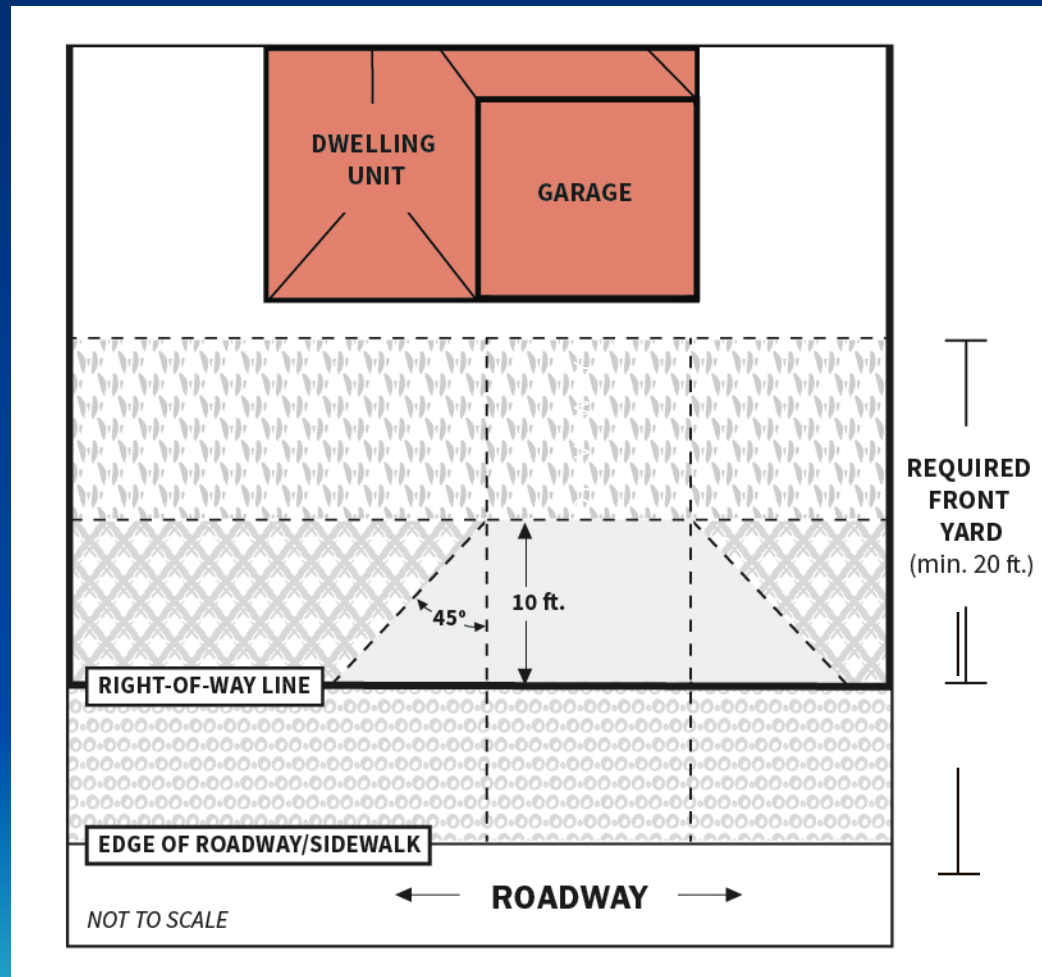


Fences, Walls, and Hedges in the Public Right-of-way

Department of Public Works



Fences, Walls, and Hedges in the Public Right-of-way



Altadena CSD Website

For more information, please visit:

<http://planning.lacounty.gov/altadena>



• QUESTIONS?



**Please be sure you
signed in**

(if we already have your email
address, we just need your name)



Schedule for remaining ACONA Meetings 2018

- May 22nd
- Sept 25th
- Nov 27th



Thank you!
Questions?