

# Altadena Coalition of Neighborhood Associations (ACONA)

Let's keep Altadena  
*"The best neighborhood in LA  
County!"*

September 28, 2021



# Agenda for Tonight's Meeting

## 7:00 PM – 8:30 PM

- **7:00 PM – 7:02 PM Quick introductions and welcome**
- **7:02 PM – 7:22 PM Covid-19 Update Vaccinations now that Delta is now 50% of cases**

- **Anders Corey** Los Angeles County

### **7:22 PM – 7:50 PM Fire Danger in Altadena**

- **N. Jamahl Butler** District Ranger, Forest Service, Angeles National Forest, Los Angeles Gateway Ranger District
- **Mark S. Skaggs**, Lieutenant, Altadena Station Operations
- **Greg Short**, Battalion Chief, Los Angeles County Fire Department

- **7:50 PM Announcements**

- **7:55 PM – 8:30 PM Q&A**

- **8:30 PM Meeting end**
- 

# Your ACONA Team

- Elliot Gold
- Nina Ehlig
- Melody Comfort
- Diane Marcussen
- Holly Rundberg
- Carlotta Martin
- Ellen Walton
- Sussy Nemer



# Los Angeles County COVID-19 Update

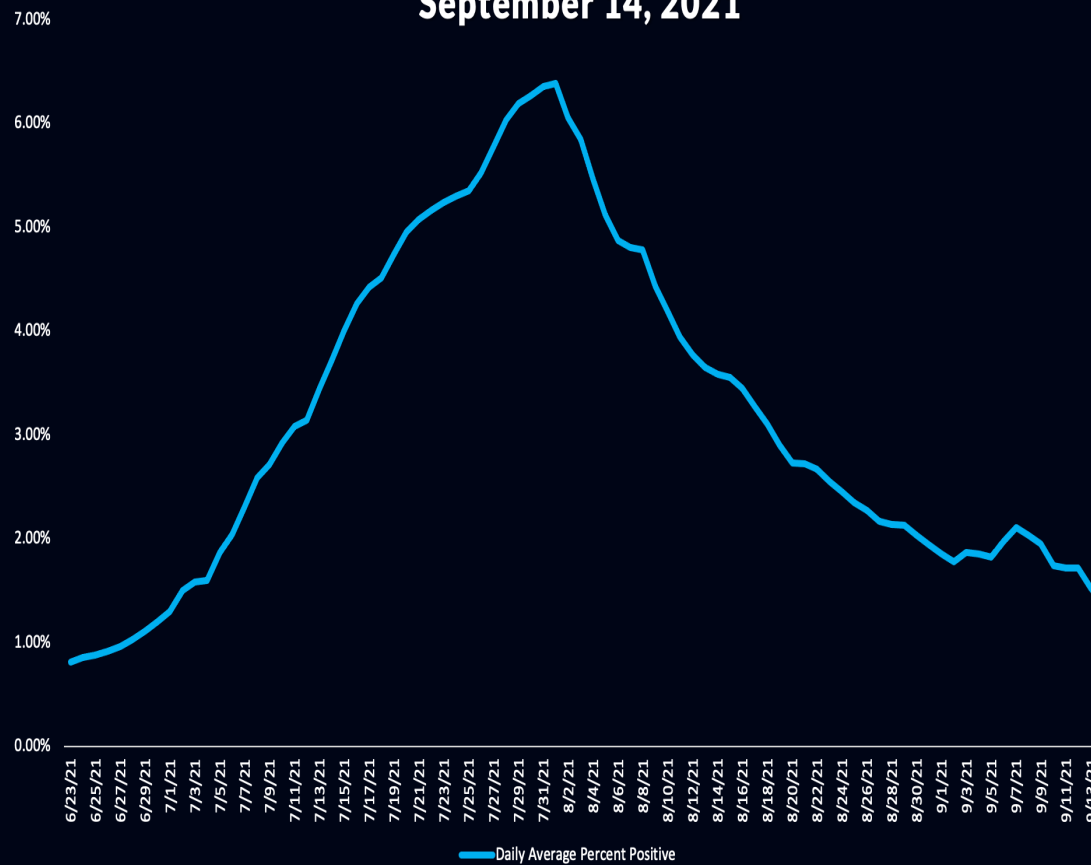
Anders Corey

Health Deputy, Los Angeles  
County Supervisor **Kathryn  
Barger**



# Case Rates

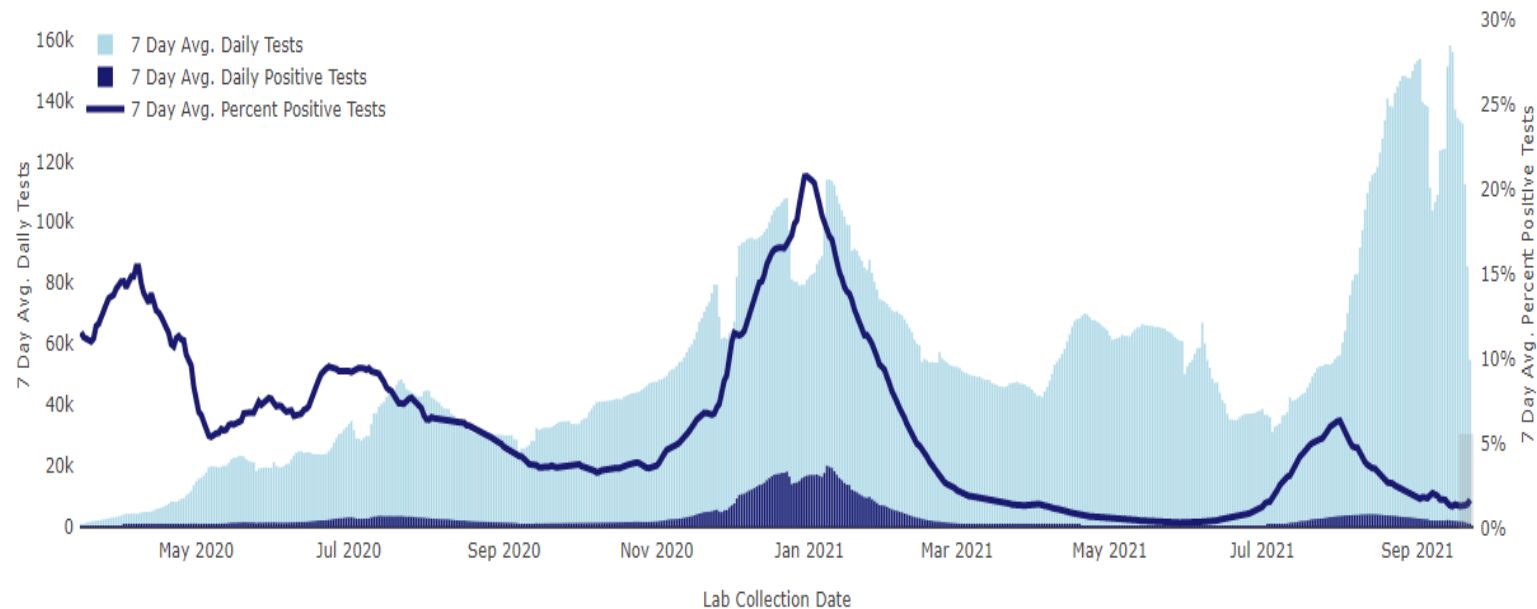
Daily Reported Percent of COVID-19 Diagnostic Tests that are Positive, Past 7-day Average  
September 14, 2021



# Case Rates Comparison

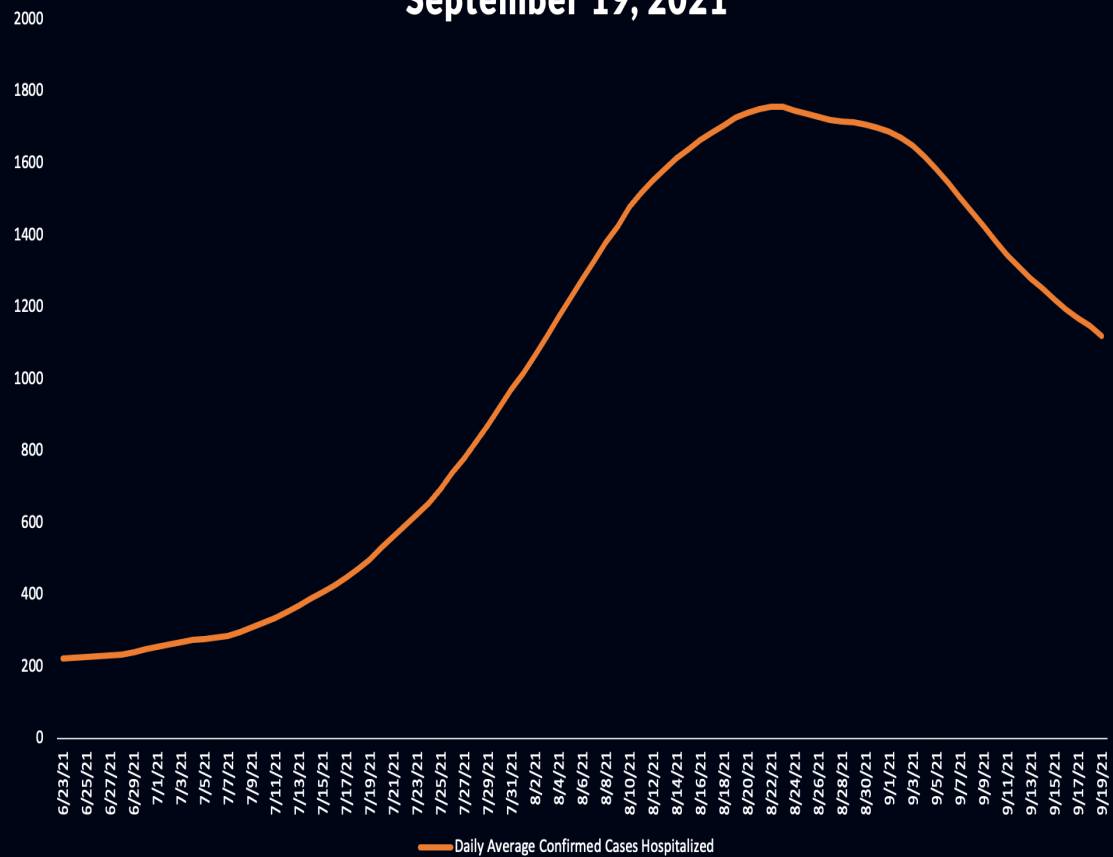
## 7 Day Avg Daily Tests by Specimen Collection Date

To zoom in on areas of the curve, drag over area of plot. To zoom back out, click plot twice.

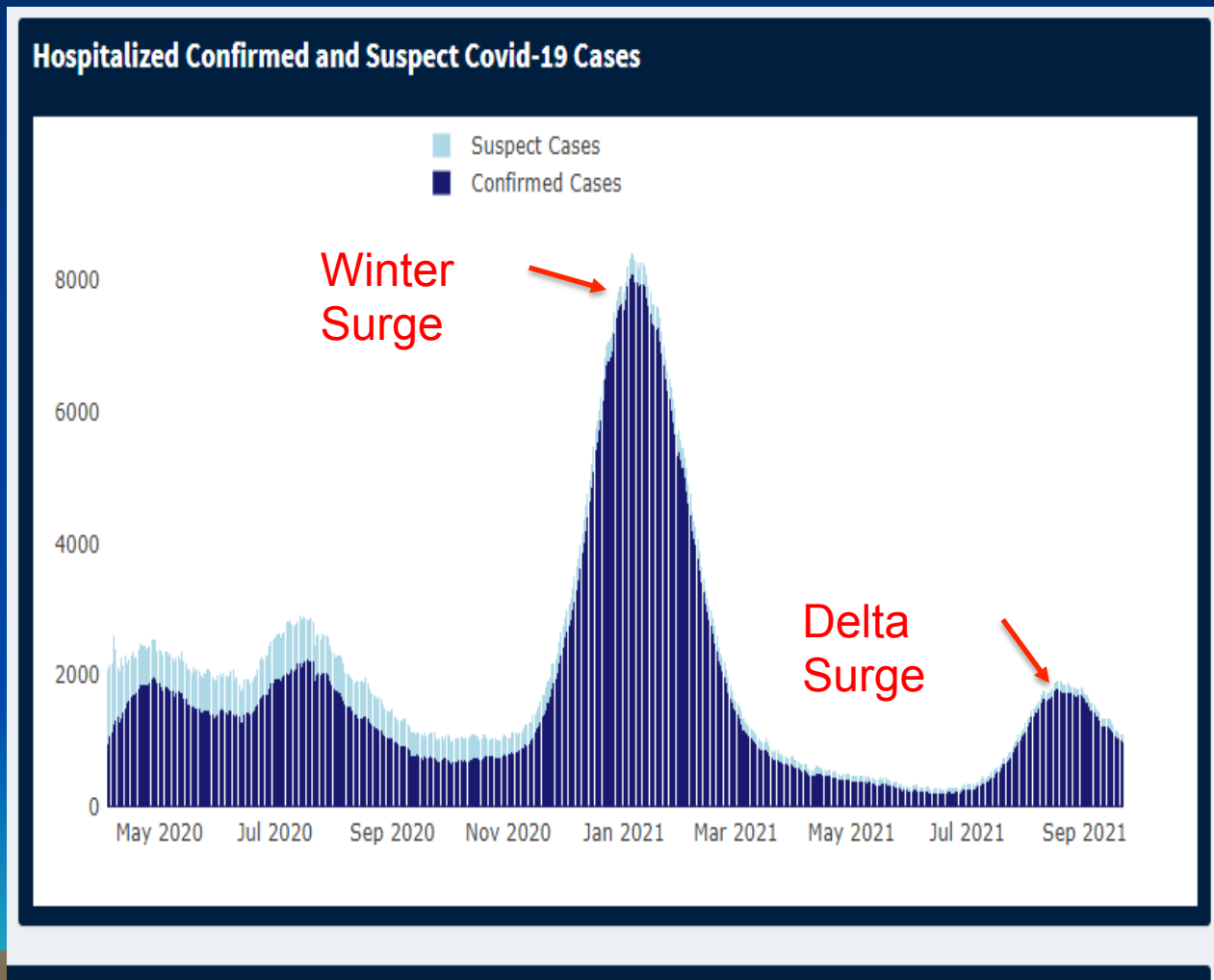


# Hospitalizations

Daily Number of Hospitalized COVID-19 Confirmed Patients,  
Past 7-day Average  
September 19, 2021



# Hospitalizations Comparison

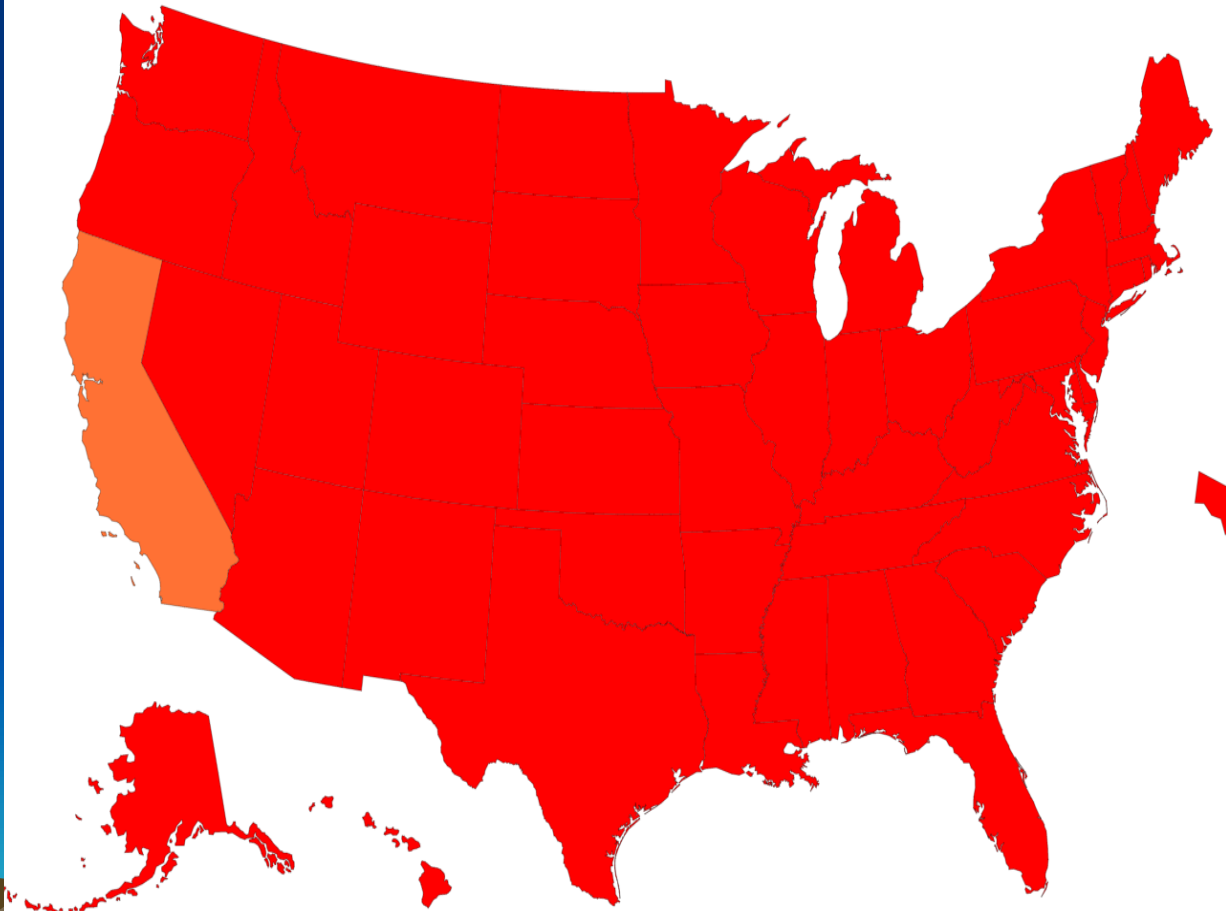




# Community Transmission

Level of Community Transmission is based on the number of cases in the last 7 days per 100,000 population and the number of tests in the last 7 days that have a positive result

Level of Community Transmission of COVID-19, by State/Territory



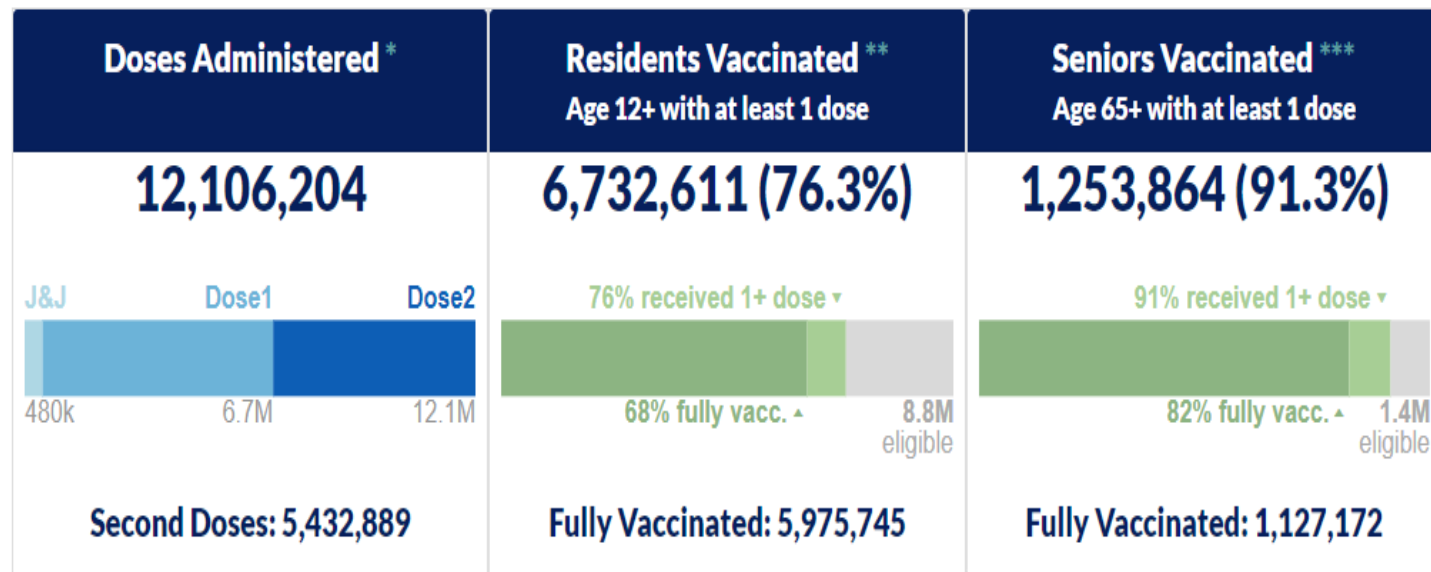
Indicator - If the two indicators suggest different transmission levels, the higher level is selected	Low Transmission Blue	Moderate Transmission Yellow	Substantial Transmission Orange	High Transmission Red
Total new cases per 100,000 persons in the past 7 days	0-9.99	10-49.99	50-99.99	$\geq 100$ <b>LA County: 111</b>
Percentage of NAATs <sup>1</sup> that are positive during the past 7 days	$0-4.99\%$ <b>LA County: 1.61%</b>	5-7.99%	8-9.99%	$\geq 10.0\%$



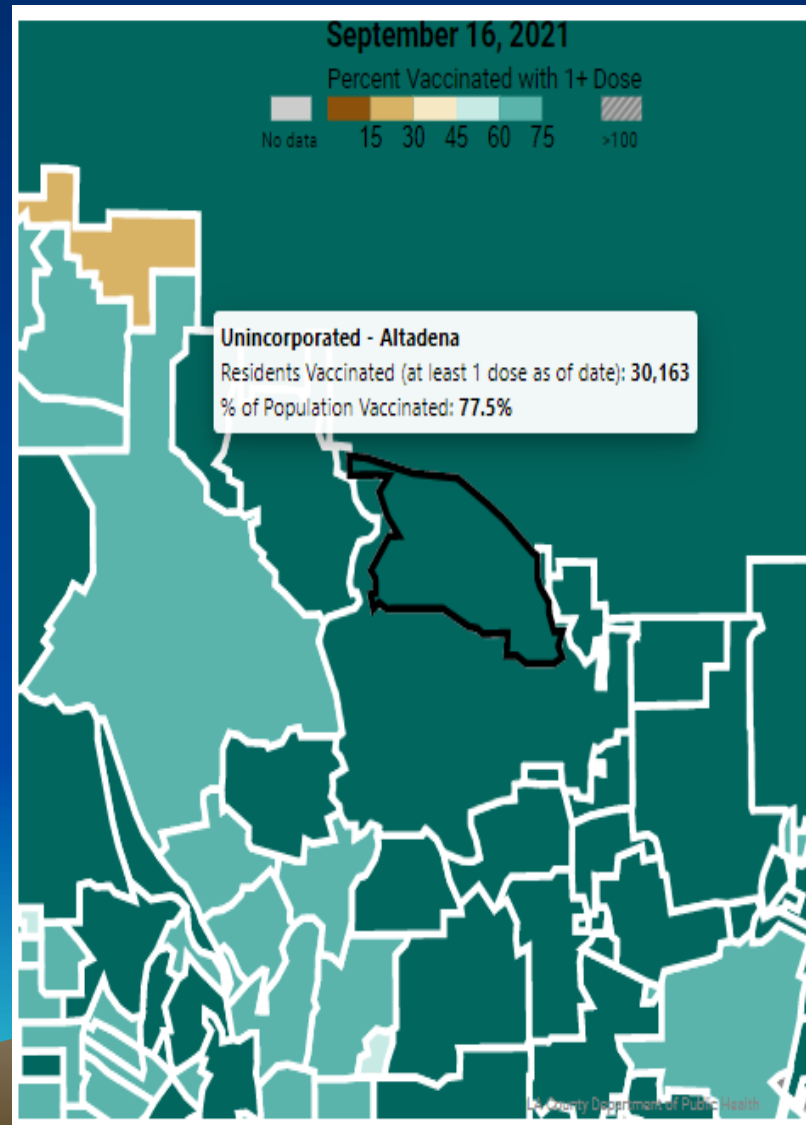
# Vaccinations Update

## COVID-19 VACCINATIONS IN LA COUNTY

UPDATED 09/20/21  
DATA THROUGH 09/16/21



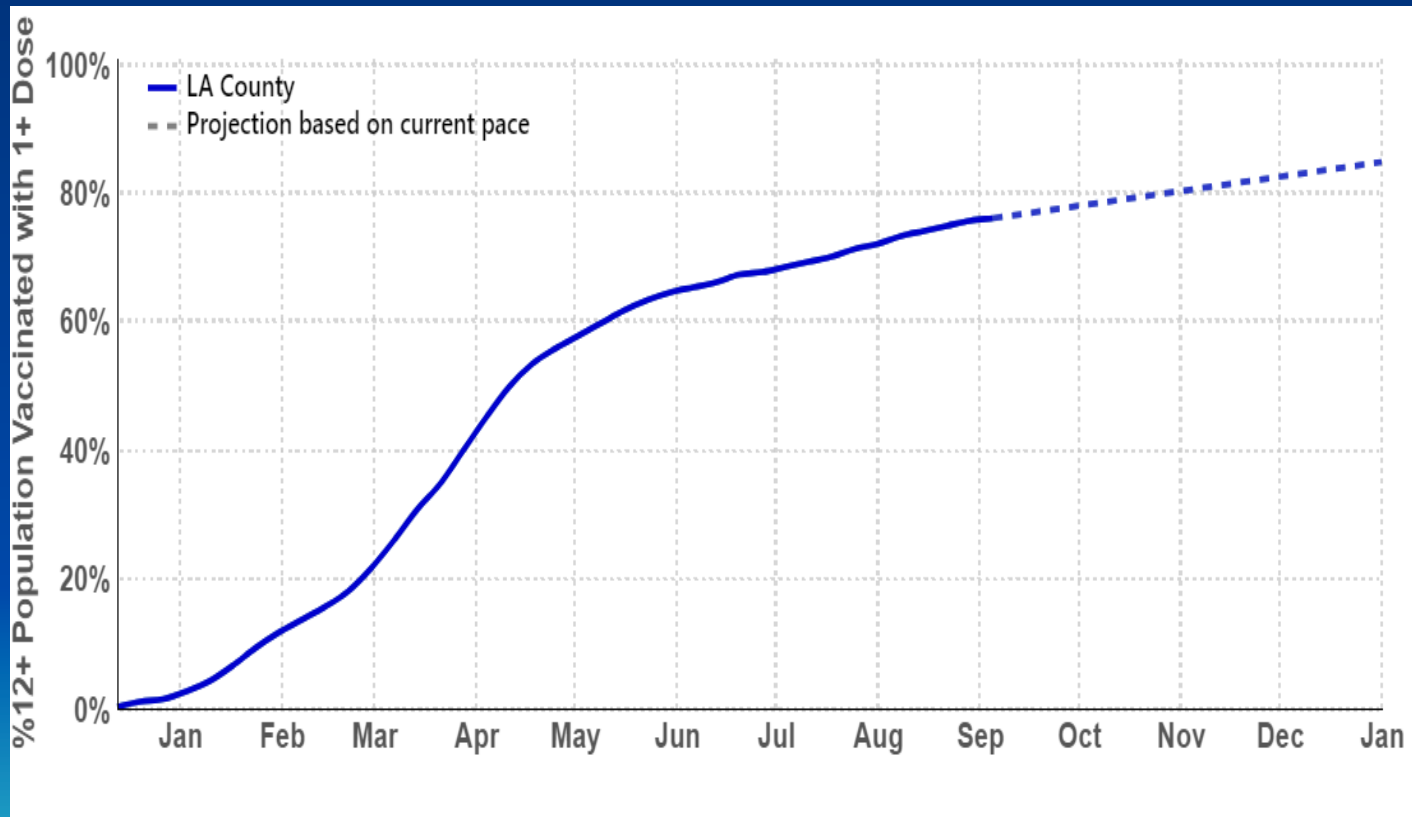
# Altadena Vaccine focus



# Data Comparisons

	12+ % Vaccinated	65+ % Vaccinated
<b>Altadena</b>	<b>77.5%</b>	<b>92.8%</b>
Pasadena	81.2%	96.1%
South Pasadena	86.3%	92.4%
La Cañada	83%	91%
East Pasadena	80.8%	85.2%

# Vaccination trends





# Thank You

- Anders Corey
  - Health Deputy, Los Angeles County





# 7:22 PM – 7:42 PM Fire Danger in Altadena

- N. Jamahl Butler** District Ranger, Forest Service, Angeles National Forest, Los Angeles Gateway Ranger District
- Mark S. Skaggs**, Lieutenant, Altadena Station Operations
- Greg Short**, Battalion Chief



**N. Jamahl Butler** District Ranger, Forest Service,  
Angeles National Forest, Los Angeles Gateway  
Ranger District



**Mark S. Skaggs, Lieutenant, Altadena  
Station Operations**



# Criminal Acts Related to Destruction of Property by Fire

## Penal Code Section 451: Arson

- The defendant burned or set fire to a structure, property, or forest land

*AND*

- The defendant did so willingly and maliciously

*\*Willfully = purposefully; maliciously = intent to do harm*

## Penal Code Section 452: Reckless Burning

- The defendant burned or set fire to a structure, property, or forest land

*AND*

- The defendant did so recklessly

*\*Recklessly = aware actions present a substantial and unjustifiable risk*



## Los Angeles County Code 307.6: Open fires

A person shall not build, light, maintain, or cause or permit to be built, lighted, or maintained, any open outdoor fire or use or cause or permit to be used, any open outdoor fire for any purpose except:

- When such fire is set or permission for such fire is given in the performance of the official duty of any public officer
- When such fire is set pursuant to permit on property used for industrial or institutional purposes for the purpose of instruction of employees in methods of fighting fire.
- When such fire is set in the course of any agricultural operation in the growing of crops or raising of fowl or animals.
- On a public beach area owned, managed, or controlled by the County, otherwise permitted by this code.
- In a County-owned park or recreation camp as otherwise permitted by this code.
- Bonfires permitted by the fire code official.
- For cooking, recreational, or ceremonial fires on private property with a maximum fuel area of 3 feet (914 mm) or less in diameter and 2 feet (610 mm) or less in height, in locations outside of wildfire risk areas.

## Los Angeles County Code 110.5: Responsibility for Fire Suppression Costs

Allows for the recovery of costs related to fire suppression from any person who unlawfully or negligently causes a fire; or from one who fails or refuses to correct a fire hazard after having received notice.



**Greg Short, Battalion Chief  
Los Angeles County Fire Dept.**



# Access to Fire Safety Info

- <https://cafiresafecouncil.org/resources/links-for-more-information/>



# Page 1



NEWS

ABOUT US

GRANTS & FUNDING

RESOURCES

EVENTS

CONTACT



CURRENT WILDFIRES

## LINKS FOR MORE INFORMATION

[Español](#)

### HERE ARE SOME LINKS TO OUR MOST FREQUENTLY USED SITES:

#### [CAL FIRE](#)

The Department of Forestry and Fire Protection serves and safeguards the people and protects the property and resources of California.

#### [FOREST AND RANGELANDS](#)

**Forests and Rangelands** is an active, cooperative effort between the United States Department of the Interior (DOI), the United States Department of Agriculture (USDA), and their land management agencies. **Forests and Rangelands** provides fire, fuels, and land management information for government officials, land and wildland fire management professionals, businesses, communities, and interested organizations and individuals.

[Resources Link](#)

#### [NATIONAL FIRE PROTECTION ASSOCIATION](#)

Brush, grass and forest fires don't have to be disasters. NFPA's [Firewise Communities Program](#) encourages local solutions for safety by involving homeowners in taking individual responsibility for preparing their homes from the risk of wildfire.

#### [FIRE ADAPTED COMMUNITIES](#)

Firewise is a key component of Fire Adapted Communities— a collaborative approach that connects all those who play a role in wildfire education, planning and action with comprehensive resources to help reduce risk.



# Page 2

## CALIFORNIA VOTER FOUNDATION

Find Congressional, State Senate and Assembly District numbers for California.

## DUN & BRADSTREET

Dun & Bradstreet (D&B) provides a D-U-N-S Number, a unique nine-digit identification number, for each physical location of your business. D-U-N-S Number assignment is FREE for all businesses required to register with the US Federal government for contracts or grants.

## GENERAL SERVICES ADMINISTRATION

U.S. General Services Administration provides workplaces by constructing, managing, and preserving government buildings and by leasing and managing commercial real estate. GSA's acquisition solutions offer private sector professional services, equipment, supplies, and IT to government organizations and the military. GSA also promotes management best practices and efficient government operations through the development of government wide policies.

## SYSTEM FOR AWARD MANAGEMENT (SAM)

The System for Award Management (SAM) is the Official U.S. Government system that consolidated the capabilities of CCR/FedReg, ORCA, and EPLS.

## FIND LATITUDE AND LONGITUDE

By using this geographic tool you can get the **lat long coordinates from an address**. Please type the address which would include the name of the city/town, state and street name to get more accurate lat

# Page 3

## **FIND LATITUDE AND LONGITUDE**

By using this geographic tool you can get the **lat long coordinates from an address**. Please type the address which would include the name of the city/town, state and street name to get more accurate lat long value.

## **LEARN ABOUT THE WILDFIRE PROBLEM AND UNDERSTAND YOUR COMMUNITY'S HAZARDS/RISKS**

- [Fire Behavior Triangle](#)
- [Wildfire Risk to Communities](#)
- [CFSC Disaster Ready Resources](#)

## **UNDERSTAND HOW AN EMBER ENVIRONMENT CAN SPREAD A WILDFIRE TO STRUCTURES**

- [Ember characteristics](#)
- [Fire safety information for residents](#)

## **TAKE SOME BASIC STEPS TO HARDEN YOUR STRUCTURE**

- [Wildfire and Buildings](#)
- [Fire Adapted Communities](#)

## **MAINTAIN YOUR STRUCTURE'S EXTERIOR**

- [Get ready in a weekend](#)
- [Wildfire preparedness tips](#)

# Page 4

## UNDERSTAND WHAT YOUR STRUCTURE'S 0-5-FOOT ZONE IS AND WHY IT IS SO IMPORTANT

- [Make your home wildfire ready](#)
- [How fast homes can burn video](#)

## MONITOR YOUR ENVIRONMENT DURING WILDFIRE WEATHER PERIODS AND LEAVE EARLY

- [Ready Set Go – Prepare for Wildfire](#)

## OUR PARTNERS



UNITED STATES  
FOREST SERVICE



EDISON  
INTERNATIONAL



BUREAU OF LAND  
MANAGEMENT – U.S.  
DEPARTMENT OF THE  
INTERIOR



FARMERS INSURANCE  
COMPANY



STATE FARM



CAL FIRE

# Announcements



# ALTADENA Clean Air Day Fair

Kick Gas With Eco-Friendly Yard Maintenance Equipment

Featuring Dan Mabe • American Green Zone Alliance

**Saturday October 9 • 10 to 2** Drop in anytime  
between 10 and 2

Altadena Library Lawn • 600 E. Mariposa St. Altadena

- ✿ Learn about the latest in eco-friendly techniques and tools.
- ✿ Personal consultation and demonstrations with Dan Mabe.
- ✿ Hear about the health impacts of gas mowers and blowers.
- ✿ Try out various types and brands of professional equipment.
- ✿ Learn about lawn equipment rebates from SCAQMD.
- ✿ Learn how trees clean the air and how you can get a free tree.
- ✿ Bring the kids. We'll have crayons, coloring books, and more.
- ✿ Refreshments will be provided.

Take the Clean Air Day pledge at [cleanairday.org](http://cleanairday.org)

Clean Healthy Air  
**CHA2CHA**  
Clean Healthy Altadena

 **Altadena  
Libraries**  
[altadenalibrary.org](http://altadenalibrary.org)

 **ALTADENA HERITAGE**  
[altadenaheritage.org](http://altadenaheritage.org)

 CALIFORNIA  
CLEAN AIR DAY

**AGZA**  
AMERICAN GREEN ZONE ALLIANCE

Rotary   
ROTARY CLUB OF ALTADENA



# RUN FOR ALTADENA TOWN COUNCIL!

- Did you know your neighborhood is represented by council members?
  - Interested in contributing to your local community?

## Run for Altadena Town Council

JOIN!



VOTE!



Altadena has a rich history and by all counts is destined for a rich future; BUT, only if we make it so... To realize our goals of a safer, cleaner, more vibrant, more connected Altadena, it's going to require participation from all of us. We can't ever say, "someone else will do it" or ask "why don't THEY...?" WE are the ones; WE are here; RIGHT NOW; and we can make a change!

Visit [www.altadenatowncouncil.org](http://www.altadenatowncouncil.org)

For Application Instructions

Due by: October 8, 2021, 5:00pm

Don't forget to VOTE!

Your VOTE is your VOICE for Altadena. It's very important to show our strength in numbers in local elections by casting your vote!

# Questions?



# Next ACONA Meeting

Nov. 17, 2021

(A Wednesday)

