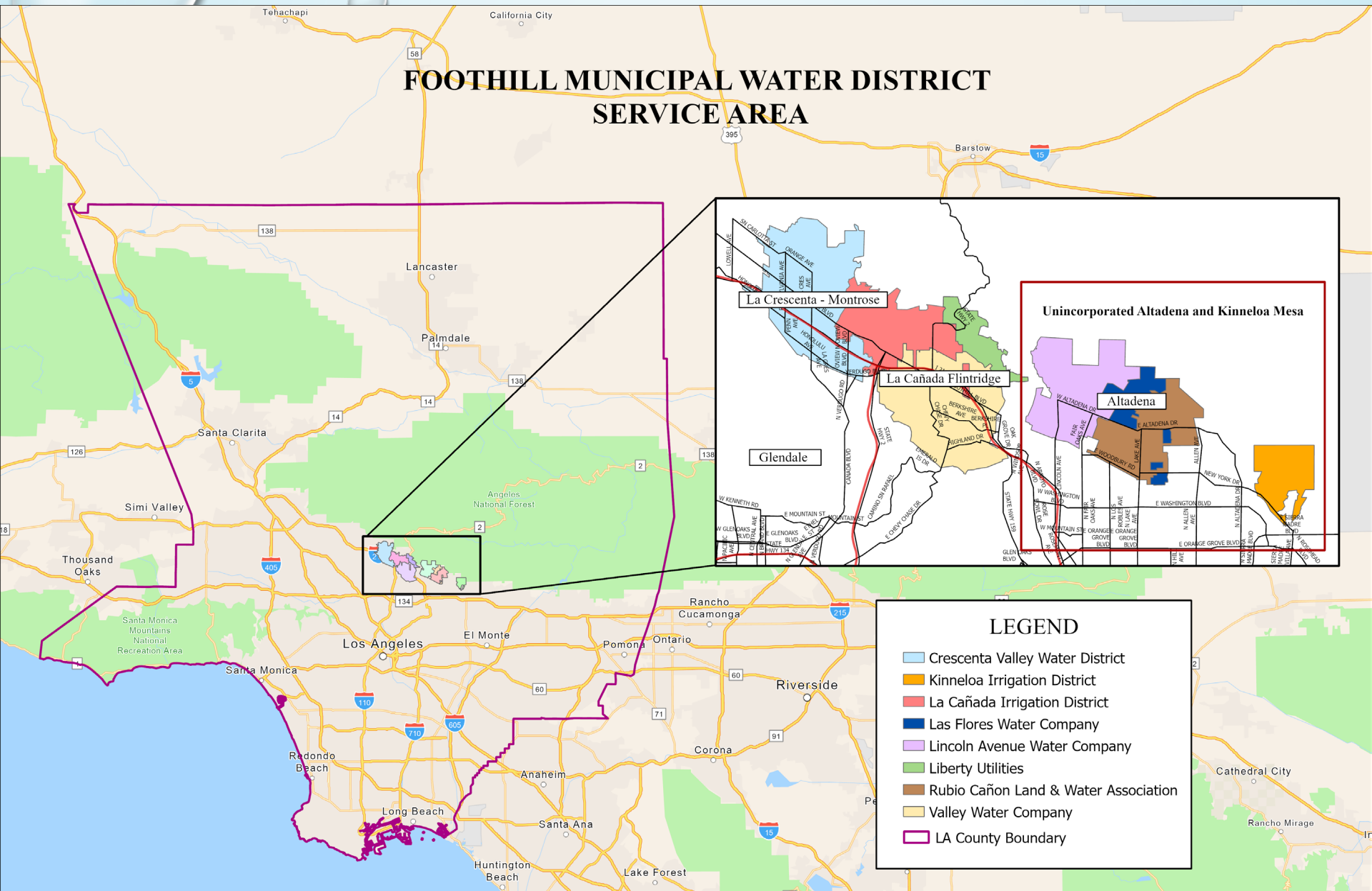


EATON FIRE – DAMAGE AND COSTS TO IMPACTED COMMUNITY WATER SYSTEMS



FOOTHILL MUNICIPAL WATER DISTRICT SERVICE AREA



Wildfire Destruction within Foothill MWD's Service Area

56% of Lincoln Avenue Water Company's customers homes destroyed

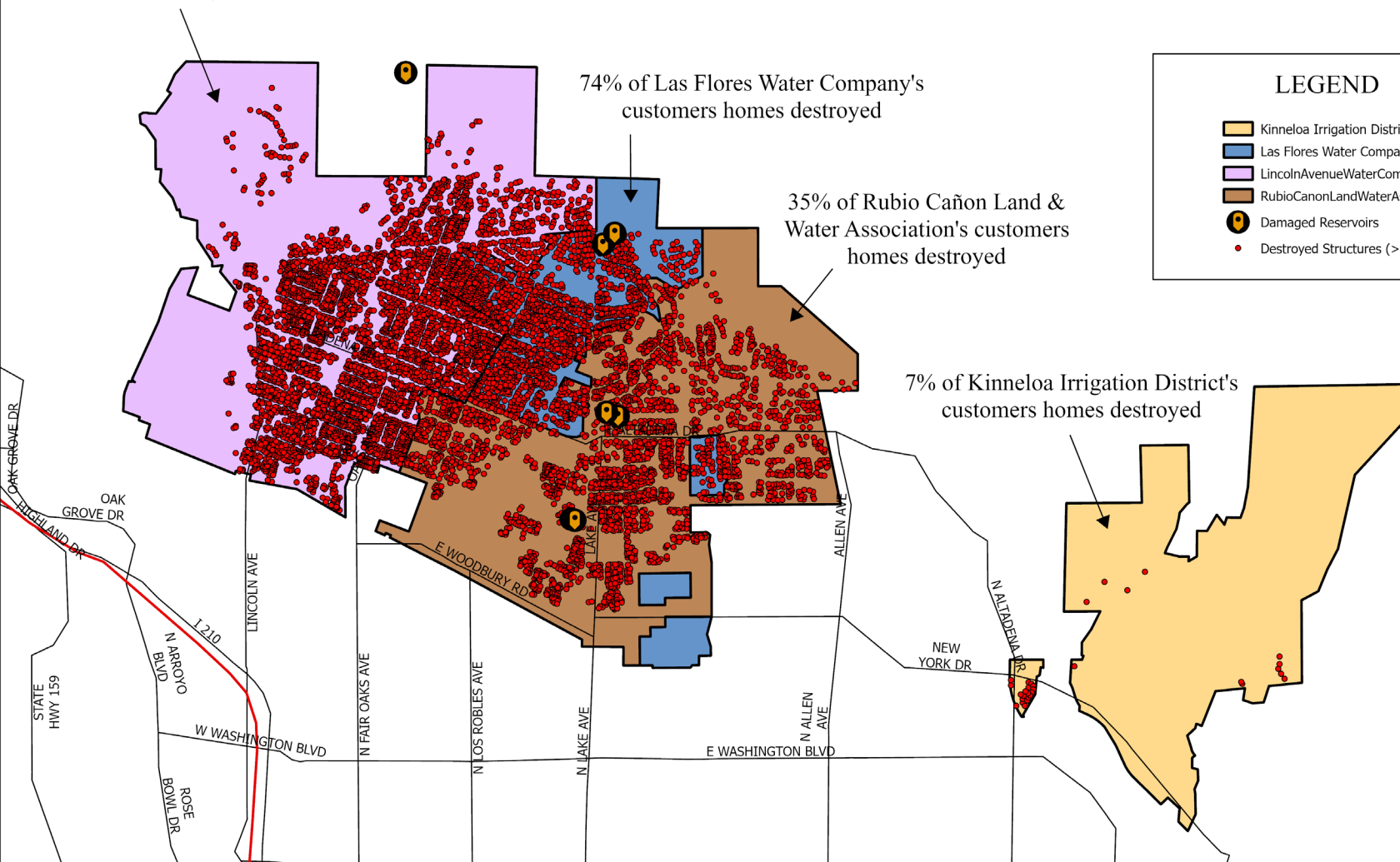
74% of Las Flores Water Company's customers homes destroyed

35% of Rubio Cañon Land & Water Association's customers homes destroyed

7% of Kinneloa Irrigation District's customers homes destroyed

LEGEND

- Kinneloa Irrigation District
- Las Flores Water Company
- Lincoln Avenue Water Company
- Rubio Cañon Land & Water Association
- Damaged Reservoirs
- Destroyed Structures (>50%)



LOCAL MUTUALS SERVING OUR COMMUNITY

- 3 OF 4 AFFECTED AGENCIES ARE MUTUALS:
 - LAS FLORES WATER COMPANY
 - LINCOLN AVENUE WATER COMPANY
 - RUBIO CAÑON LAND AND WATER ASSOCIATION
- KINNELOA IRRIGATION DISTRICT IS A SPECIAL DISTRICT
- MUTUAL WATER COMPANIES ARE PRIVATE, NOT-FOR-PROFIT ORGANIZATIONS THAT PROVIDE SAFE AND RELIABLE WATER TO SMALLER COMMUNITIES
- THEY ARE CLASSIFIED AS PUBLIC WATER SYSTEMS UNDER THE SAFE DRINKING WATER ACT
- SERVING POPULATION OF 32,000 IN UNINCORPORATED LOS ANGELES COUNTY COMMUNITIES OF ALTADENA AND KINNELOA MESA
- OVER 150 YEARS OF SERVING WATER TO AREA RESIDENTS AND INDUSTRY



Rubio staff testing water quality

2/7/2025

NEAR TERM CASH CRUNCH

- WATER AGENCIES OPERATE WITH HIGH FIXED COSTS AND LOW FIXED REVENUES – HEAVILY RELIANT ON USAGE CHARGES
- BECAUSE OF FIRES, GROSS REVENUE GOES DOWN SIGNIFICANTLY WHILE OPERATING COSTS ARE EVEN HIGHER
 - ADDITIONAL STAFF REQUIRED TO MANAGE WATER QUALITY COMPLIANCE, FEMA COORDINATION, AGENCY REBUILDING EFFORT AND CUSTOMER REBUILDING EFFORT
 - INACTIVE SERVICES GENERATE NO REVENUE BUT NEED TO HAVE SYSTEM CAPACITY TO SERVE THEM WHEN REBUILD OCCURS
- BUSINESS INTERRUPTION COSTS, LOSS OF EXPECTED REVENUE, GENERALLY NOT ELIGIBLE FOR FEMA PUBLIC ASSISTANCE

BUILDING BACK BETTER

- FEMA IS REIMBURSEMENT PROGRAM - WE NEED THE CASH IN HAND FIRST
- FEMA REIMBURSEMENTS ARE “LIKE FOR LIKE” WHICH MAY NOT BE BEST CONSIDERING CLIMATE CHANGE IMPACTS TO WATER SYSTEMS
- OPPORTUNITIES TO REBUILD WITH FUTURE DISASTER MITIGATION IN MIND
- UPGRADE INFRASTRUCTURE TO MEET CURRENT FIRE FLOW REQUIREMENTS
- ADD POWER RESILIENCY TO DEAL WITH INCREASE POWER SAFETY SHUTOFF EVENTS
- ADD RENEWABLE AND ZERO CARBON POWER SOURCES TO ALIGN WITH STATE CLIMATE GOALS AND SB 2010 “CLEAN ENERGY, JOBS AND AFFORDABILITY ACT”

WHAT WE ARE UP AGAINST

How will we obtain funding to fix systems as we wait for reimbursement of expenses from FEMA?

- SIGNIFICANT DAMAGE TO INFRASTRUCTURE – RESERVOIRS, PIPELINES, CONNECTIONS...
- TEMPORARY FIXES TO GET SYSTEMS RUNNING
- LARGE NUMBER OF WATER QUALITY TESTS WHICH TAKE WEEKS FOR RESULTS TO ENSURE SAFE WATER
- ABOUT 50% OF HOMES IN ALTADENA DESTROYED – LOSS OF REVENUES TO FIX SYSTEMS AND PAY FIXED COSTS

DAMAGE

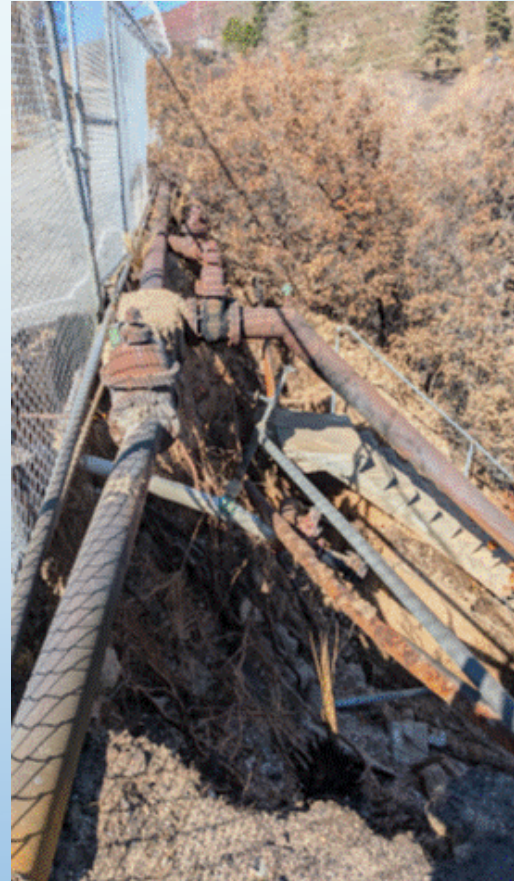
- 50% OF HOMES DESTROYED
- 7 RESERVOIRS DAMAGED OR DESTROYED
- 1 PUMP STATION DAMAGED
- 5 PIPELINES DAMAGED
- 2 COMMUNICATION TOWERS TO RUN SYSTEM DAMAGED



Las Flores Water Company Lake Avenue Reservoirs

NEEDED FUNDING

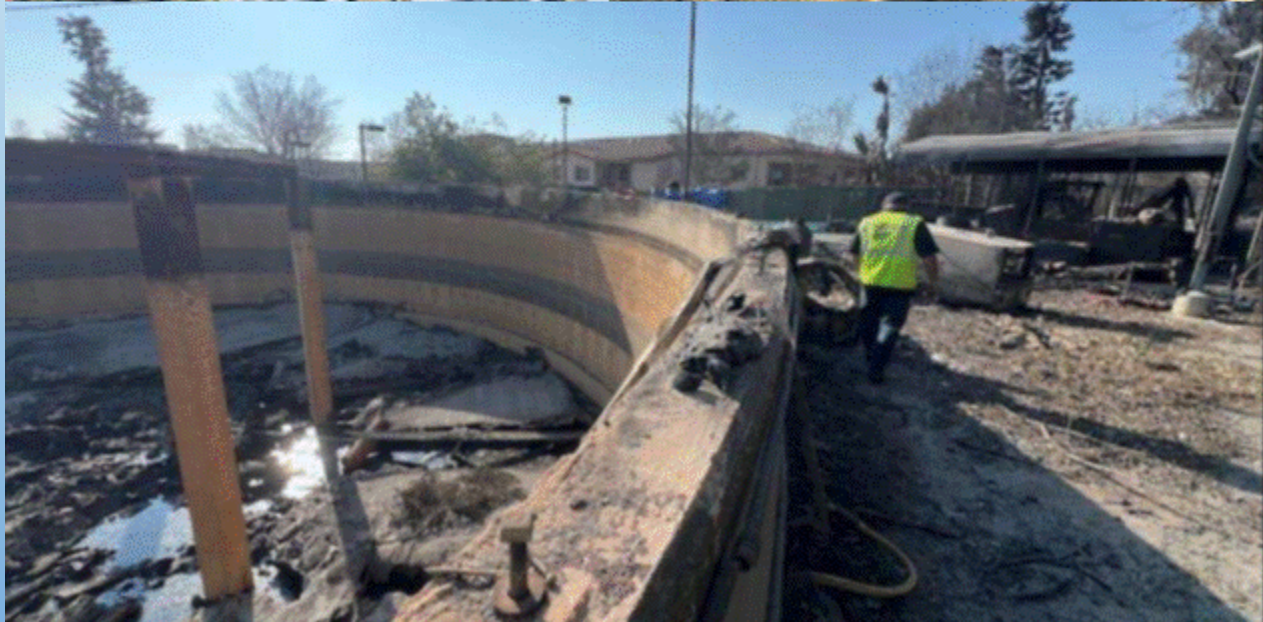
- \$120 MILLION TO REPAIR FIRE-DAMAGED WATER INFRASTRUCTURE
- \$80 MILLION NEEDED TO SUPPORT OPERATIONS OF SYSTEMS FOR FIXED COSTS WITH SIGNIFICANTLY REDUCED REVENUES



Slope damage and Exposed Pipes at Lincoln Avenue Reservoir Site.

\$200 Million Needed in Total Funding

RUBIO CAÑON CALAVERAS TANKS



CONTACT INFORMATION

- FOOTHILL MUNICIPAL WATER DISTRICT
 - RICHARD ATWATER, PRESIDENT (ATWATER.RICHARD@GMAIL.COM) (818) 219-8648
 - FRANK COLCORD, DIRECTOR (MR.FRANK.COLCORD@GMAIL.COM) 818.216.5482
 - NINA JAZMADARIAN, GENERAL MANAGER (NINA.JAZ@FMWD.COM) 818.790.4036 X102
- KINNELOA IRRIGATION DISTRICT
 - TOM MAJICH, GENERAL MANAGER, (TM@KIDWATER.INFO) 626.833.0210
- LAS FLORES WATER COMPANY
 - WILLIAM KIMBERLING, GENERAL MANAGER, (LFWC@PACBELL.NET) 626.797.1138
- LINCOLN AVENUE WATER COMPANY
 - JENNIFER TORRES, GENERAL MANAGER, (JENNIFER@LAWC.ORG) 626.798.9101 X213
- RUBIO CAÑON LAND AND WATER ASSOCIATION –
 - LISA YAMASHITA-LOPEZ, GENERAL MANAGER (LISA@RCLWA.ORG) 626.797.0509 X206